

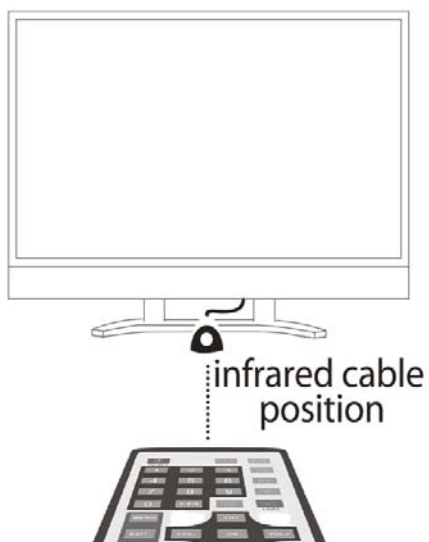
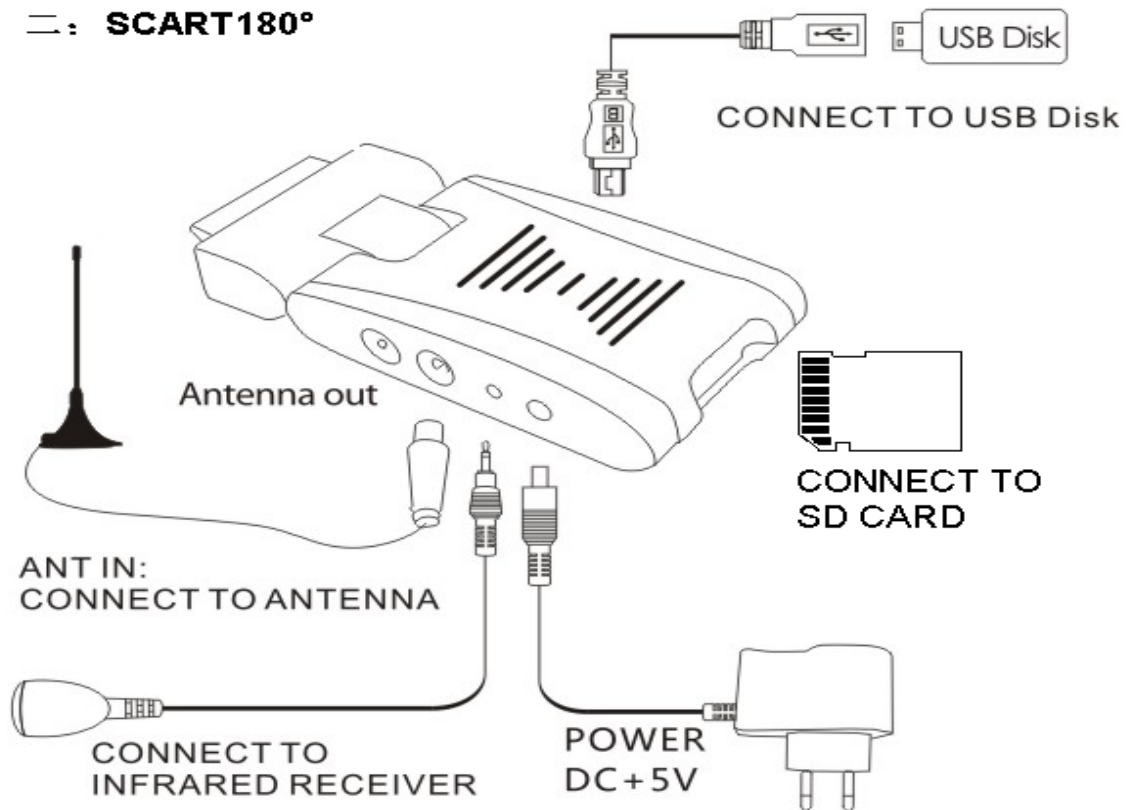
USER MANUAL

SCA1

Digital Terrestrial Receiver
and Recorder

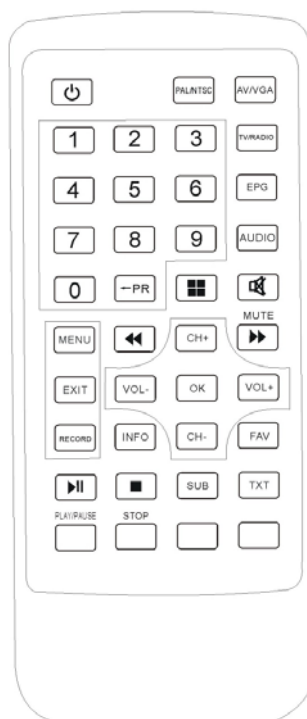


1. Connections



After connecting the SCART to your TV please be sure to select from your TV remote control the key that allows you to select SCART source (could be "AV" or "source" or "INPUT" or "SCART")

Remote Control



Key	Function	Key	Function
POWER	TV ON/OFF	MUTE	Audio Mute
0-9	Enter channel number or TV setting into menu	TV/RADIO	Switch between TV and Radio
EPG	Electronic program guide	AUDIO	Select audio mode
←PR	Switch to previous program	PAL/NTSC	Switch between TV standard
INFO	Info about current program	MENU	Show main menu
EXIT	Exit from menu	▶ 	Freeze Picture / Pause when used with Recording function
RECORD	Start Recording	STOP	Stop Recording
↕	UP/Down in item lists	FAV	Display favourite program list
CH+/CH-	Change program or move Up/Down in the Main menu	VOL+/VOL-	Adjust the volume or move LEFT/RIGHT in the Main menu
OK/LIST	Confirm the selection inside menu	SUB	Subtitle
3x3 Grid	Channel preview (9 windows)	TXT	Function not available
Red/White Buttons	Switching functions in Main Menu – red button services not supported	AV/VGA	AV output and VGA output mode conversion

MAIN MENU



1. TV : View television and create a channel viewing list
2. RADIO : Listen to radio and create a listening list
3. MULTIMEDIA : Listen and watch video/audio/photos from your external HD or USB memory using SD card slot or mini USB port, or record to external memory devices (SD card, memory stick or hard drive)
4. GAME : Play games
5. SETUP : Scan available programmes, access recording options, user interface and update the firmware

3. SETTING DVB-T FREEVIEW RECEPTION

3.1 Quick scan channels

Step1: Please press **MENU** button, then press **VOL+** button,

Select "SETUP: Installation" press **OK** button.

Step2: OSD Language Setting

Step3: Country Setting

Step4: Then press **RED** and **OK** button to search for channels.

4.2. Full Installation

******* SEE PAGE 2 FOR HOW TO INSERT MEMORY CARD/USB STICK, ANTENNA AND REMOTE CONTROL SENSOR *******

4.21. Setting Language

Users can select a preferred language among various languages in the Installation page.

- (1) Press <menu> button to enter Main Menu.
- (2) Press <VOL-/VOL+> button to select SETUP option.
- (3) Press <CH+/CH-> button to select Installation option.
- (4) Press <OK> button to enter Installation page.
- (5) Press < CH+/CH- > button to select OSD Language option.
- (6) Press < VOL-/VOL+ > button to select a language.

See Figure 1: If there is no channel database (from scan result) you may start at step 5 above.



Figure1. Main Menu, SETUP



Figure 2. Installation Page

4.22. How to receive TV programs?

Scan the broadcast frequencies and bandwidth to receive all programs.

- (1) Press <menu> button to enter Main Menu.
- (2) Press <VOL-/VOL+> button to select SETUP option.
- (3) Press <CH+/CH-> button to select Installation option.
- (4) Press <OK> button to enter Installation page.
- (5) Press <CH+/CH-> button to select Country Setting option.
- (6) Press <VOL-/VOL+> button to set Country Setting.
- (7) Press <RED/GREEN> button to Auto Scan or Manual Scan.

See Figure 1 above: If there is no channel database (from scan result) you may start at step 5 above.

4.23. Auto Scan

Auto Scan will first erase the entire existing channel list, and then scan default frequency and bandwidth by Country Setting. After following steps at section 4.21:

- (1) Press <RED> button to confirm to clear the database.
 - (2) Press <OK> button to confirm the database will be cleared and start Auto Scan.
- It takes some time to do Auto Scan, user can press <exit> to exit at anytime. See below.

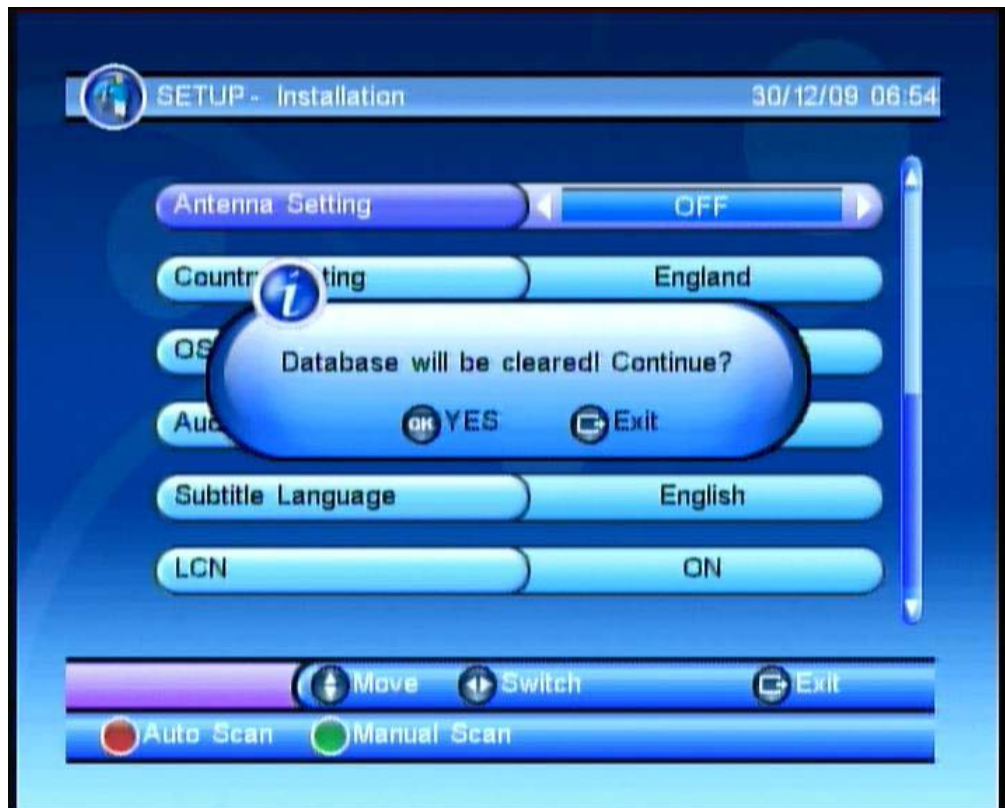


Figure 3. Clear database message

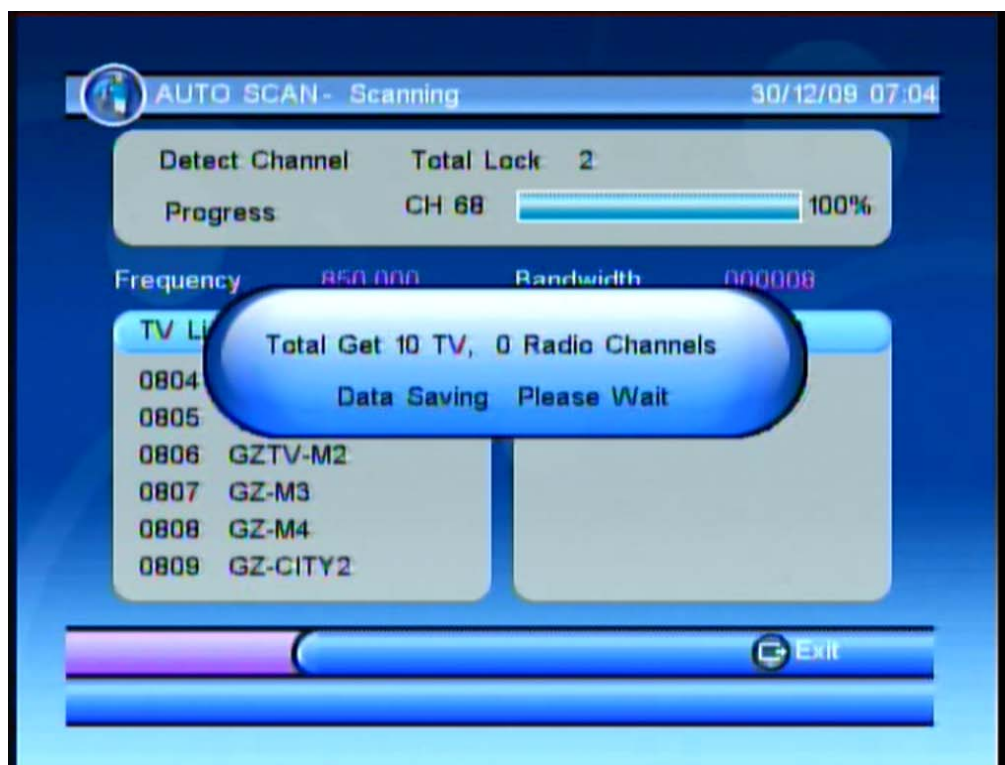


Figure 4. Auto Scan Page

4.24. Manual Scan

Manual Scan adds the new scanning results into the existing channel list - it doesn't erase the channel list. However, the user must know the Frequency and Bandwidth for scanning. If the user scans the same Frequency and Bandwidth more than once, the programs will be duplicated. After following steps at section 4.21:

- (1) Press <GREEN> button to enter Manual Scan Page.
- (2) Press <CH+/CH-> button to select Frequency option.
- (3) Press <0~9> button to input the Frequency value.
- (4) Press <CH+/CH-> button to select Bandwidth option.
- (5) Press <VOL-/VOL+> button to set Bandwidth value.
- (6) Press <OK/exit> button to start scan or exit. See Figures 5 and 6 below.



Figure 5. Manual Scan Page

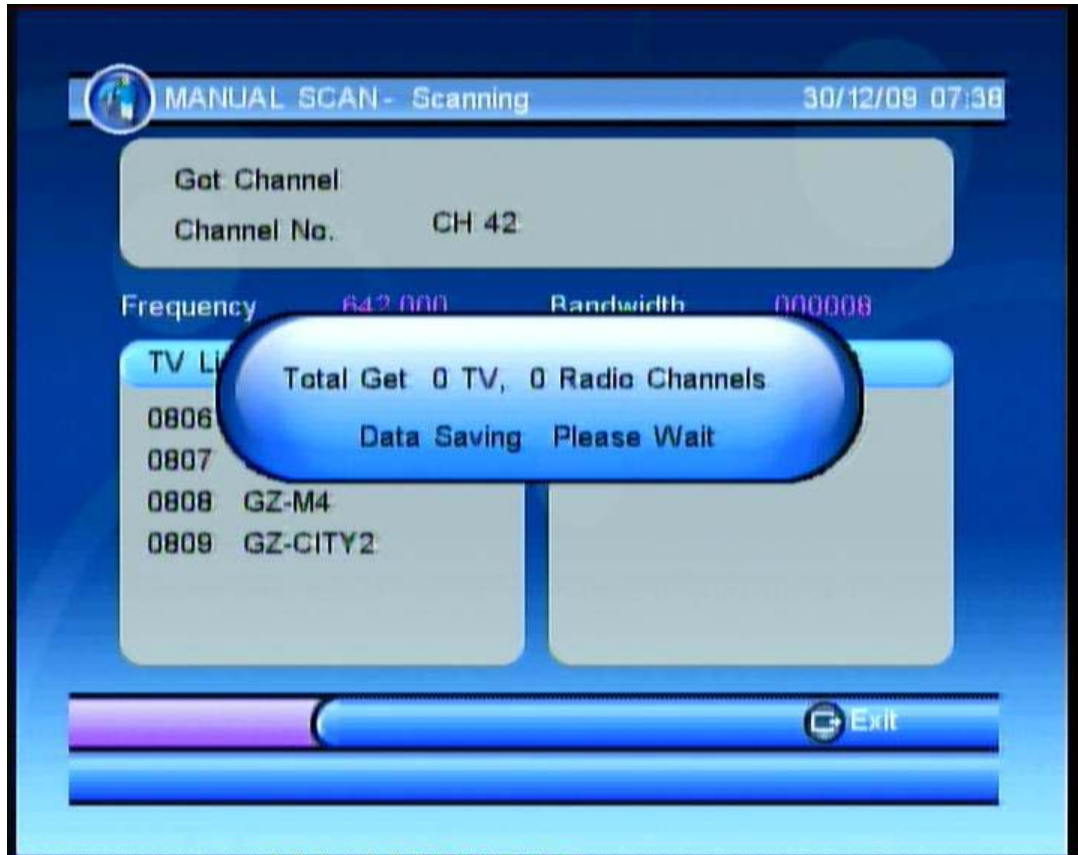


Figure 6. Manual Scan Result

4. MULTIMEDIA

The Multimedia setting requires an SD card or USB port memory device (see page 2). Enter 'My Album' and 'My Music', the screen will display "Initializing" when you insert a memory device or "Device is not ready!" if the memory device is not yet inserted/attached. See Figures 7&8



Figure 7. Multimedia

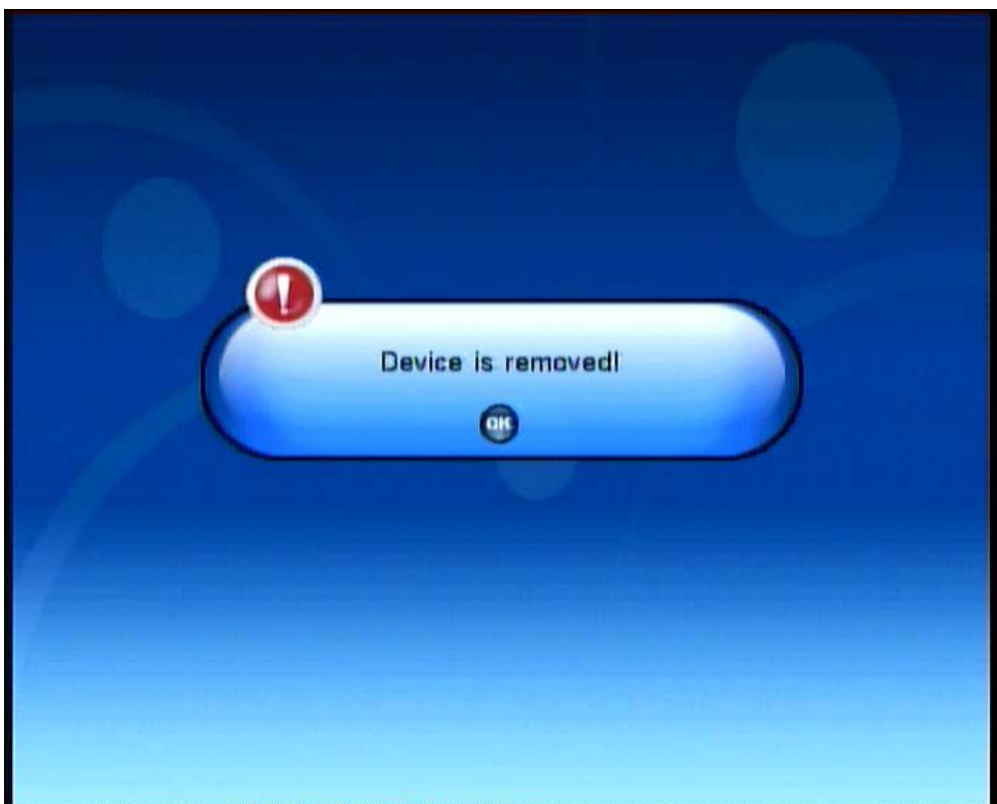


Figure 8. Device is not ready – replace external media device

From main menu please choose “**Multimedia**” where you will be able to manage:

1. My Album: Supports **JPEG** files.
2. My Music: Supports **MP3** files.
3. My Movie: Supports **DIVX** and **MPEG** files.
4. My Recorder: Supports **MPEG2** Recorded TV.

Use the colour keys to make your selection: 

5. Recording function

Please note you will need an SD card or external hard drive / memory stick with USB connection to record TV. See page 2 for details on how to connect these devices, and section 5 of these instructions regarding how to select the memory device (in the Multimedia menu) you have attached for recording TV.

6.1 How do I record video?



In “Normal play” or time-shift status, press “” button to prepare to record TV. When “One Button Recording” indicates “ON”, press “” button to start recording – when “OFF” is shown, the following screen will be seen (see Figure 3-1). Press “VOL-” and “VOL+” button to set the recording time, then press “OK” button to start. When you start recording, the top left corner of the screen will show the recorded time (see Figure 3-2).
Note: When subtitles are ‘ON’, the recorded timer bar will disappear, and you can check the status by pressing any button.



Figure 3-1 Set video recording time

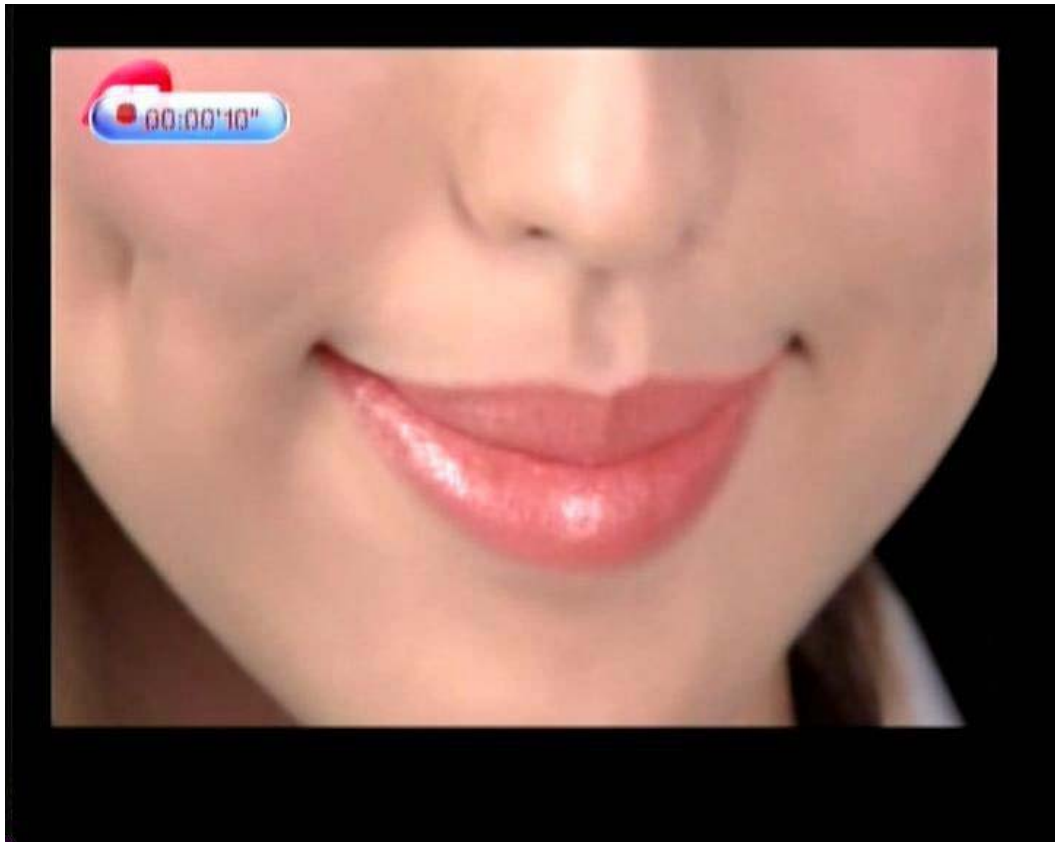


Figure 3-2 Video recording

While you are recording video, if you want to set the video recording time, press “RECORD” button to enter settings page and press “VOL-” and “VOL+” button to set time.


When the recording device is not available, the system will indicate a failure message, as Figure 3-3 indicates below. When video recording conflicts with a (preset) reserve video recording so that it cannot start to record video, the system will indicate a message and stop recording, as Figure 3-4 indicates below.



Figure 3-3 Failure of video recording



Figure 3-4 Conflict in video recording

When a requested recording time conflicts with a preset reserve recording, the system will set the recording time automatically and indicates the relevant message, as Figure 3-5 indicates. When recording ends, the system will quit recording automatically and revert back to “Normal Play” condition - if you want to stop recording video midway, just press “” button. If there is not enough memory capacity for recording video, the system will stop recording video and indicate the relevant message, as figure 3-6 indicates.

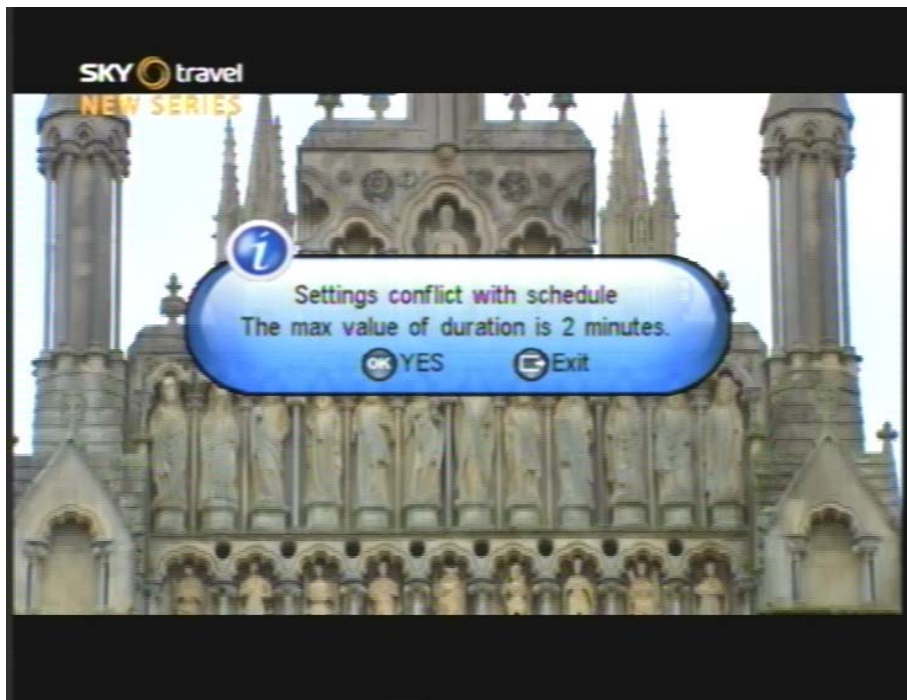


Figure 3-5 Automatically setting recording video time



Figure 3-6 Storage device is full

5.1 Preset video recording

The user can set the date, time and frequency to make a preset video recording. When the preset time arrives it will automatically start video recording. See section 6.21 for instructions:

6.21 Advance timer reserve video recording

To use the “Advance timer” reserve video recording, the process is “Menu ->Setup -> Advance Timer” then the following screen will be displayed as in the figure 4.1:



Figure 4-1 Advance timer page

There are ten positions for advance recordings: press “CH+” and “CH-” button to choose one of the locations then press the “RED” button, the following page will be displayed (4-2)



Figure 4-2 Setting Advance Timer

Press “CH+” and “CH-” to change the setting item, press “VOL-” and “VOL+” button to change the item description.

Note: Once you’ve set the planned Advance Recordings, the following page of planned recordings will appear (Figure 4-3), the red dot in front of the “EVENT” is the indication of a preset advance video recording.



Figure 4-3 Save Event

6.3 Pause Live TV & Playback*

Whilst recording as per section 6, you can pause and rewind live TV by pressing “⏮”

You can rewind at x2, x4, x8, x16 and x32 speeds. As Figure 3-7 indicates when you rewind to the beginning of the video recording position it will automatically return to normal speed play. Press “⏭” button to fast forward at x2, x4, x8, x16 and x32 speeds.

As Figure 3-8 indicates, when you forward to the present time (and thus you are watching live TV) the progress bar will disappear as you have returned to normal TV viewing. Press

“⏸” button to pause TV, as figure 3-9 indicates.

(* PLEASE NOTE: you can only pause live TV and play it back when you are already recording)



Figure 3-7 Fast rewind

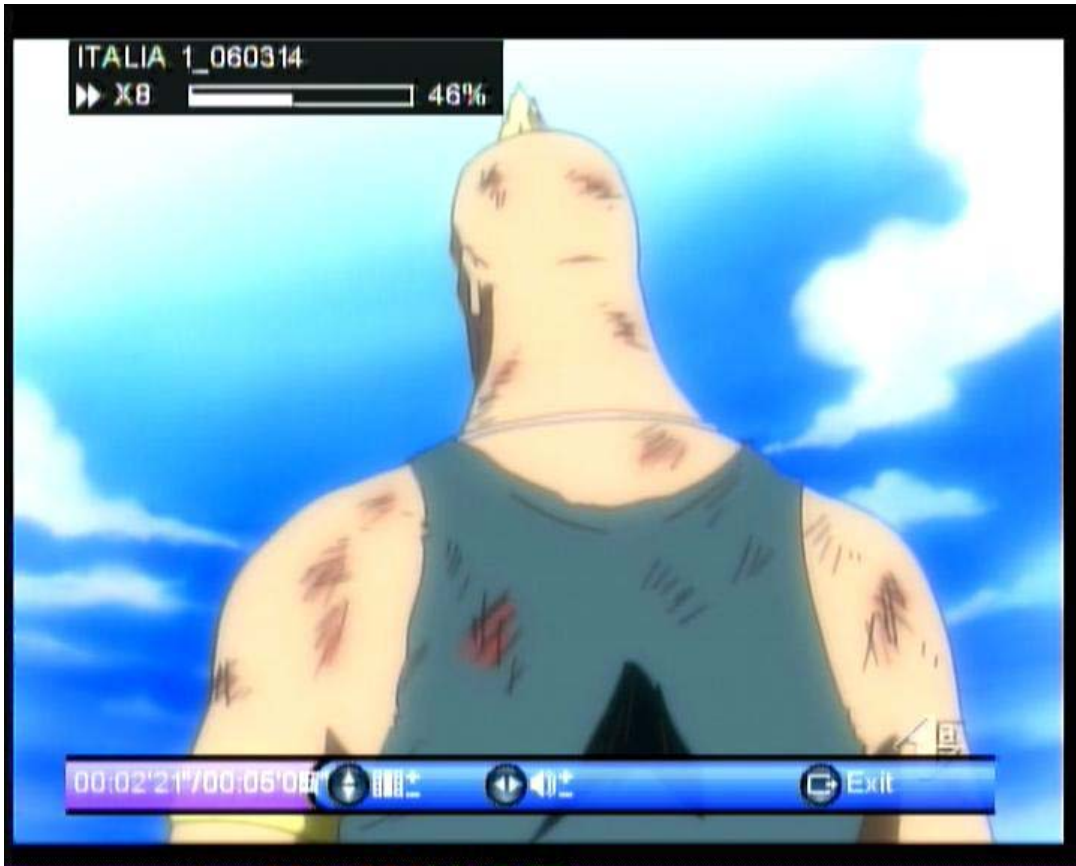



Figure 3-8 Fast forward



Figure 3-9 Pause

The timer at the lower left of the screen is the difference between live TV (current time) and the recorded TV you are watching. The lower right time indicates the recorded time. Press “” button in “Pause”, “Fast Forward” and “Fast Rewind” to return to normal speed play.

6.4 Find and view your recordings

Select ‘menu’, ‘my recorder’, ‘recorded list’ and select your recording and press ‘OK’ to view your recording.

**SHOULD YOU REQUIRE ANY ASSISTANCE
WITH YOUR SCART DVB-T FREEVIEW PLAYER
AND RECORDER PLEASE CONTACT THE
TECHNICAL HELPLINE ON 0845 555 4440.**

FAQs

Q: How many gigabytes of memory will be taken up recording one hour of TV?

A: One hour of TV will require approx 1 GB of memory.

Q: What is the maximum size SD card I can use?

A: There is no maximum, so currently available 32GB cards will be fine to use.

Q: Can I receive Digital TV Freeview in my area?

A: Check the Freeview coverage in your area by calling 08708 80 99 80 or go to www.freeview.co.uk

Q: How is this product powered?

A: It is powered by the supplied UK spec mains lead.

Q: I have set the parental lock and forgotten my PIN number – what can I do?

A: 1. Press <menu> button to enter Main Menu.
2. Select SETUP option--then select <SET DEFAULT > and press <OK> button.
3. Press PLAY/PAUSE (red) button to confirm reset.

Q: Does this unit support red button interactive services?

A: No, unfortunately not on this model.

Q: When I play back a recording I want to make the percentage bar at the top of the screen disappear – how do I do that?

A: Press INFO on the remote control to make the percentage bar disappear.

Q: If a passcode is requested what is the default passcode?

A: The default passcode is 0000.

Q: How do I turn the subtitles off?

A: Press the green button when watching TV.

Q: The remote control does not seem to work.

A: Check battery plus also that the infra red sensor is plugged in.

Q: How do I navigate around the menu?

A: By using the volume (left and right) and channel up and down buttons.

Q: When playing back recordings, the footage is played back inside a black frame. Can this frame size be enlarged e.g. to 16:9, 14:9, 4:3 formats?

A: There is no option for this on the Scart recorder, so please adjust the aspect on your own TV.

Q: Does this Scart recorder record subtitles?

A: Yes.

Q: What format do the recordings save to the memory card in?

A: It records in .TS file format - This stands for Transport Stream and is a format connected with creating MPEG2 video files.

Q: Is this device set up to receive HD channels?

A: No.

Q: Can you watch one channel while recording another?

A: No, you are only able to view and record one channel at a time.