

Quick Start Guide

Matsui 28WF10

Partmaster Direct

We hope you enjoy your new Matsui 28WF10. To help you get the most from your new TV, we recommend Partmaster Direct for accessories and spares. Partmaster Direct's range includes: Connectivity leads, Remote Controls, Mains Leads, Mains Adaptors and much much more available for delivery direct to your door. The telephone number is 0870 9090 444 and all calls are charged at National Rate.

Interference - Do not place your television near appliances which may cause electromagnetic interference (i.e. Hi-Fi speakers). If you do, it may adversely affect the working of the unit, causing the picture or sound to distort.

Covers - Do not remove any fixed covers as this may expose dangerous voltages.

Weather - It is advisable to unplug the aerial during a thunderstorm. Even if your television is switched off, it can still be damaged if lightning strikes.

Ventilation - The ventilation holes on the casing of your television prevent it from overheating. Do not block or cover these holes - especially with cloth or paper. If your television is to be built into a compartment or similarly enclosed, make sure that there is at least a gap of 10cm on both sides and 20cm at the top and back.

Damage - Never use your television if it is damaged in any way. Always place your television on a flat level surface avoiding anywhere which may be subject to strong vibration.

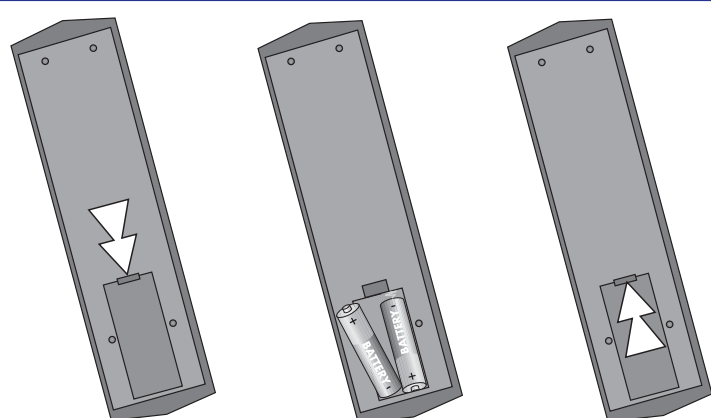
Batteries - Batteries are easily swallowed by young children. Do not allow young children to play with the remote control unit.

Temperature - Avoid extremes of temperature, either hot or cold, place your television well away from heat sources such as radiators or gas/electric fires. Do not place candles or table lamps on or near your TV.

Moisture - Do not allow your television to be exposed to rain, moisture or dust. Do not place a plant or flowers which may need watering on your TV. If any liquid is spilt into your television it can cause serious damage. If you spill any liquid into your television switch it off at the mains immediately and contact your store. When cleaning your TV we recommend that you do not spray cleaning fluid directly onto the TV screen.

Ornaments - Vases and other water containers or lamps should not be put on top of your TV set.

1 Inserting batteries into the Remote Control

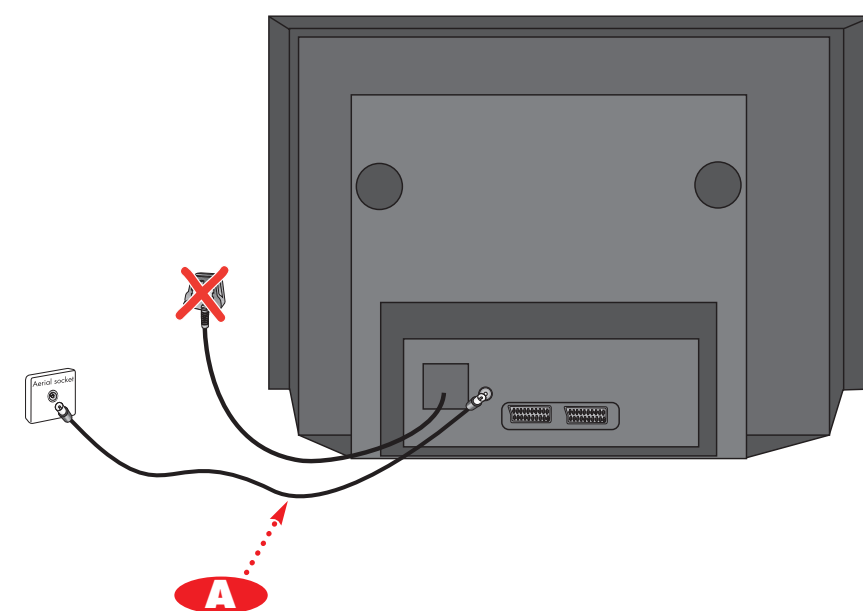


2 Connecting your TV to the aerial

If you just want to connect your TV to an aerial connect it as shown below.

If you want to connect your TV to a VCR go to stage 3.

If you want to connect your TV to a VCR and a Satellite/Cable box then go to stage 4.



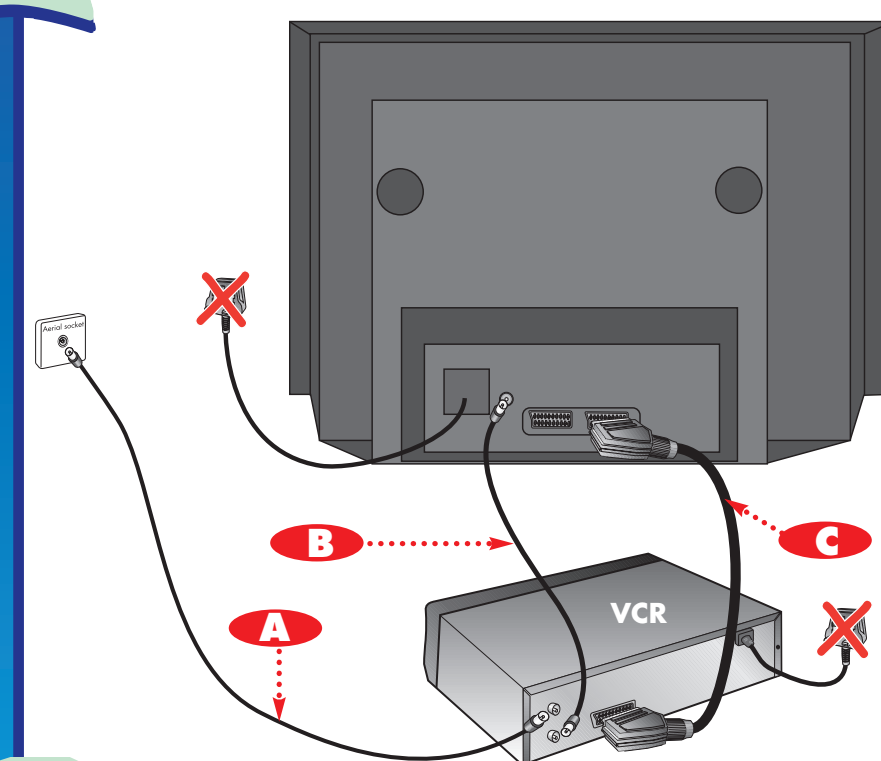
A Connect one end of the aerial lead to the aerial socket on the wall and the other end of the lead to the socket marked **A** on the back of your TV.

Now go to stage 5.

All connections must be made with the power disconnected.

3 Connecting your TV to a VCR

Do not connect scart leads until after you have performed the automatic tuning process (stages 6-9).



A Connect your aerial lead to the socket marked **RF IN** on the back of your VCR.

B Connect one end of the RF lead to the aerial socket marked **RF** on your TV and the other end to the socket marked **RF OUT** on the back of your VCR.

Now go to stage 5.

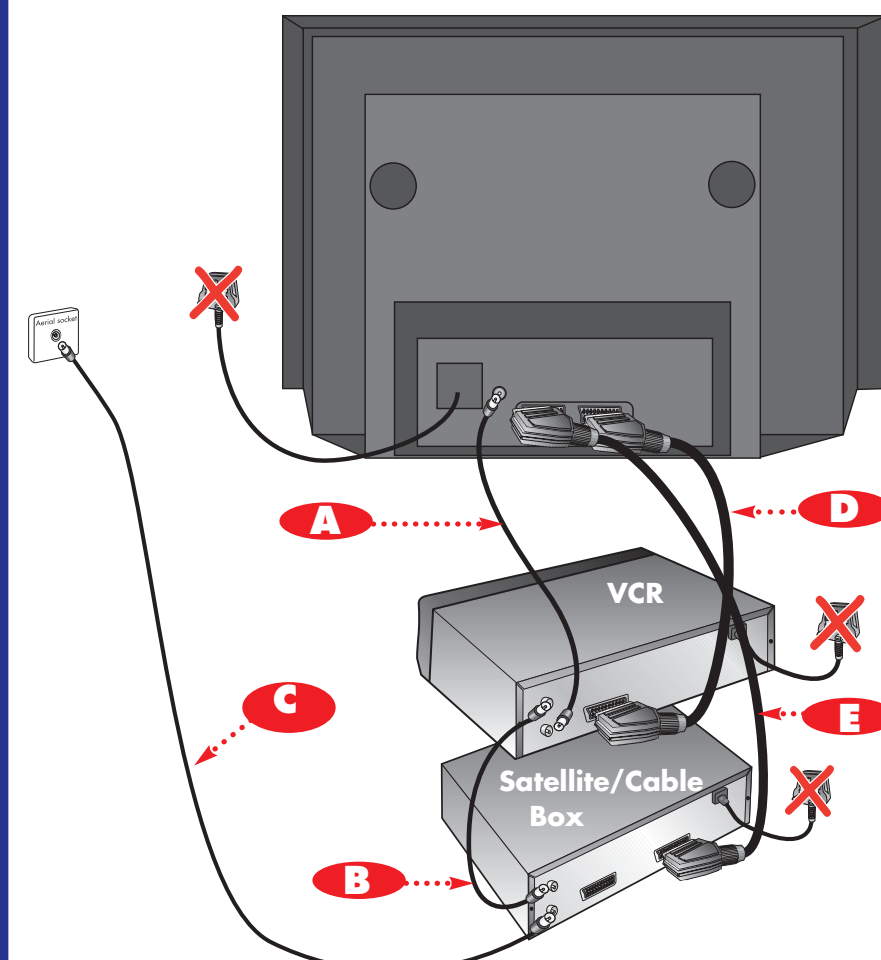
C AFTER AUTOMATIC TUNING

If you have a scart lead connect one end of the lead to the scart socket on your VCR and connect the other end to the scart socket marked **AV1** on the back of your TV.

All connections must be made with the power disconnected.

4 Connecting your TV to a VCR and Satellite/Cable box

Do not connect scart leads until after you have performed the automatic tuning process (stages 6-9).



A Connect one end of an RF lead to the aerial socket marked **RF** on your TV and the other end to the socket marked **RF OUT** on the back of your VCR.

B Connect one end of another RF lead to the aerial socket marked **RF IN** on your VCR and the other end to the socket marked **RF OUT** on the back of your Satellite/Cable box.

C Connect your aerial lead to the socket marked **RF IN** on the back of your Satellite/Cable box.

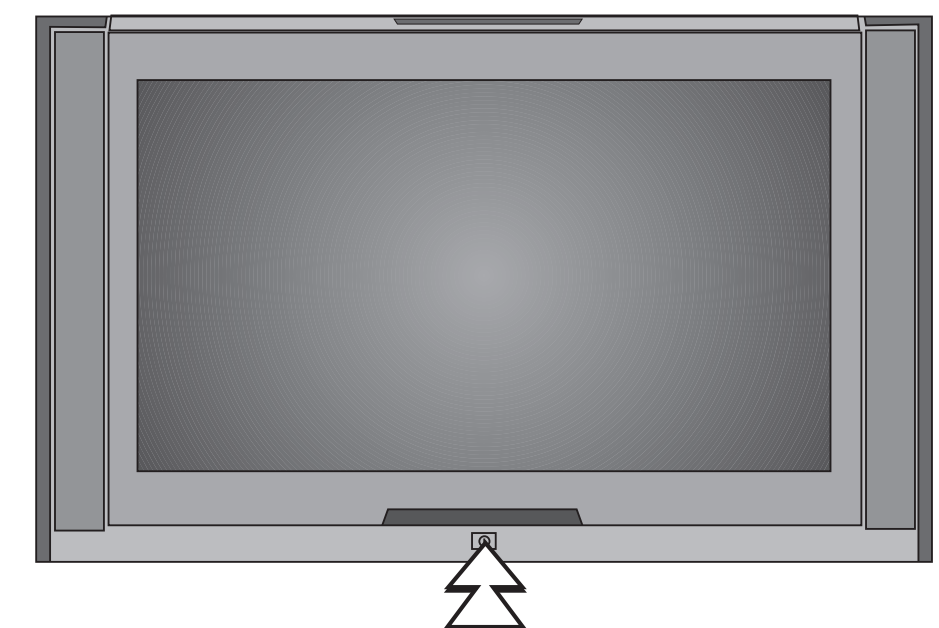
D AFTER AUTOMATIC TUNING

If you have scart leads connect one end of one of them to the socket marked **AV2** on the back of your TV. Connect the other end to the scart socket on the back of your VCR.

E Connect another scart lead to the socket marked **AV1** on the back of your TV, then connect the other end to your Satellite/Cable box.

All connections must be made with the power disconnected.

5 Switch on your TV, and any other equipment connected to it



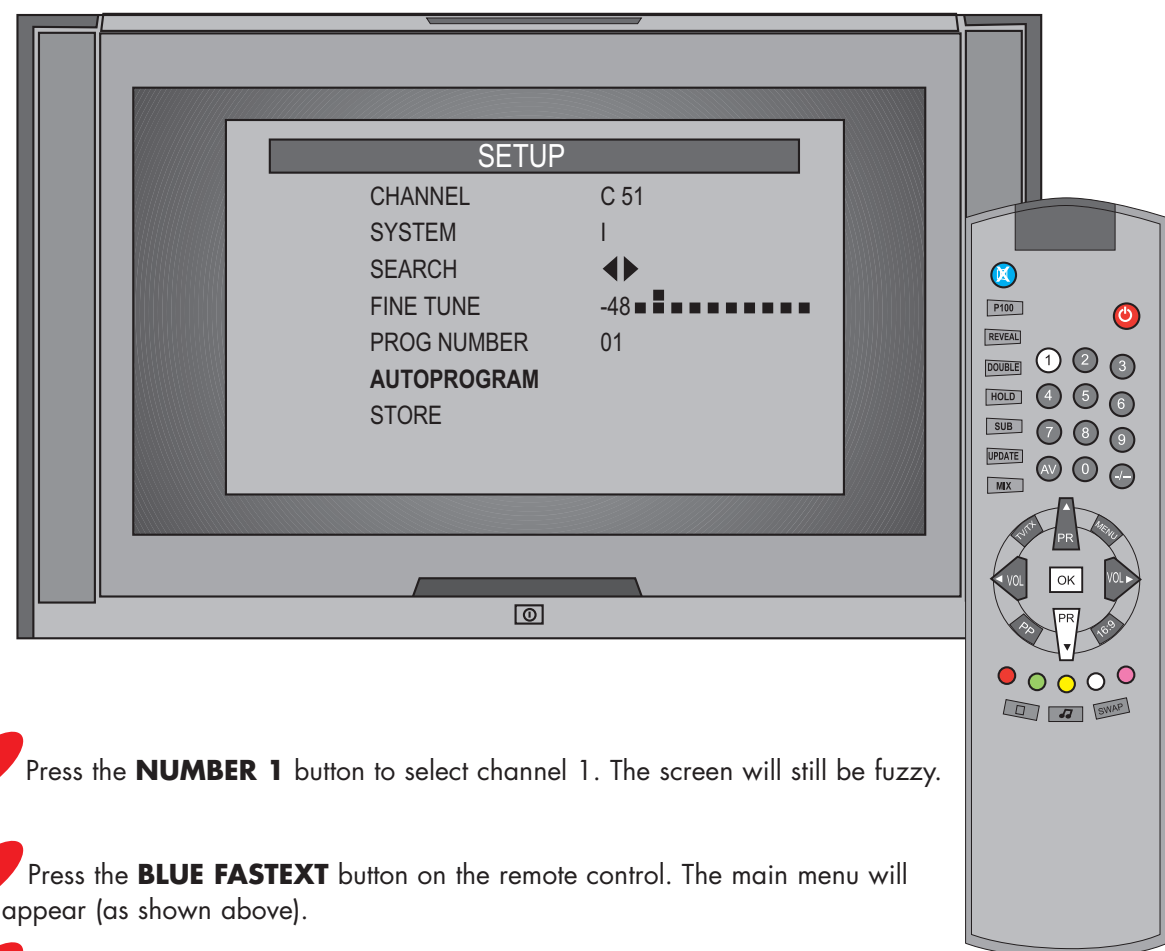
A Plug your TV into the mains and any other equipment that you have connected.

B Press the **POWER** switch on the front of your TV to switch on your TV. The screen will be fuzzy.

C If you have connected a VCR switch it on, insert a pre recorded tape and press PLAY. This will make it much easier to find your VCR channel when you tune your TV in. The screen will still be fuzzy.

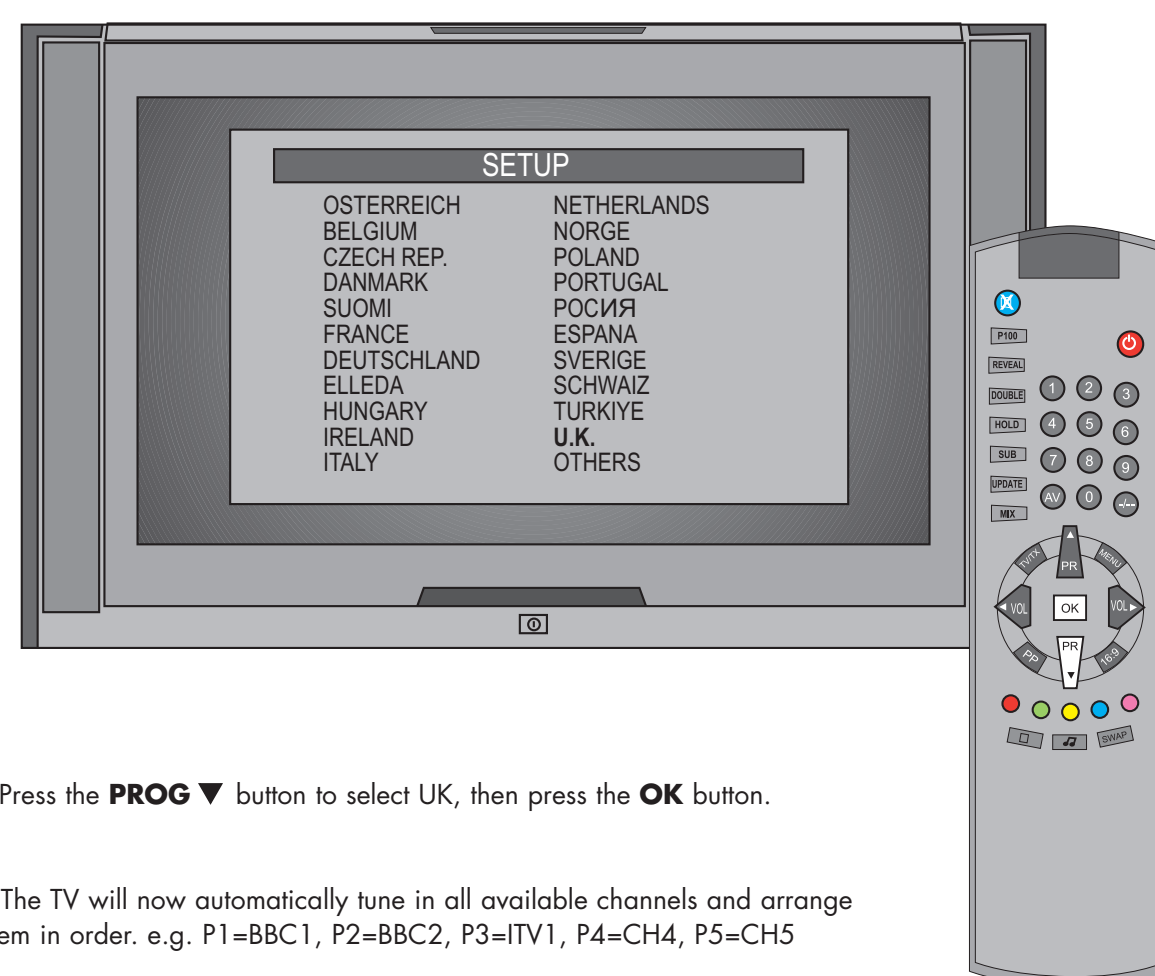
D If you have connected a Satellite/Cable box switch it on and select a channel that you will easily recognise, like BBC NEWS 24. This will make it much easier to find your Satellite/Cable channel when you tune your TV in. The screen will still be fuzzy.

6 Automatic Tuning



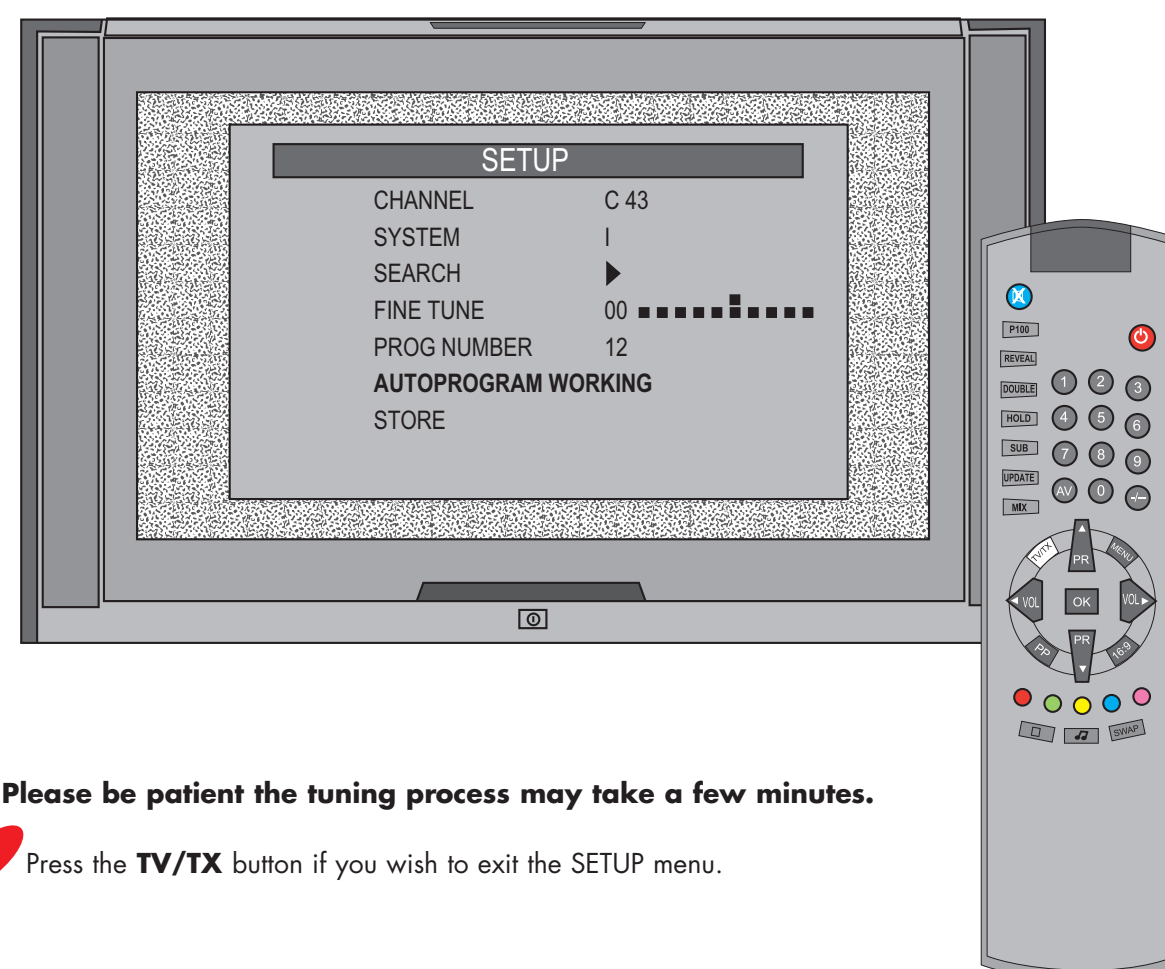
- A** Press the **NUMBER 1** button to select channel 1. The screen will still be fuzzy.
- B** Press the **BLUE FASTEXT** button on the remote control. The main menu will appear (as shown above).
- C** Press the **PROG ▼** button on the remote control to highlight AUTOPROGRAM and then press the **OK** button. The COUNTRY menu will appear on-screen.

7 Select Country



- A** Press the **PROG ▼** button to select UK, then press the **OK** button.
- B** The TV will now automatically tune in all available channels and arrange them in order. e.g. P1=BBC1, P2=BBC2, P3=ITV, P4=CH4, P5=CH5

8 Start tuning



Please be patient the tuning process may take a few minutes.

- A** Press the **TV/TX** button if you wish to exit the SETUP menu.

9 Your TV is now tuned in



Your TV is now fully tuned in, and ready to watch.

The menu will automatically switch off after 12 seconds if no buttons are pressed.

IF YOU HAVE SCART LEADS, CONNECT THEM NOW AS SHOWN IN STAGES 3 AND 4.

Check list...

You should now have...

- Put the batteries in your remote
- Connected your TV to an aerial or VCR and/or VCR Satellite/Cable box
- Switched on your TV and any other connected equipment
- Tuned in all available channels. Your TV should have stored the channels in the following order.

Channel 1 . . . BBC1
Channel 2 . . . BBC2
Channel 3 . . . ITV
Channel 4 . . . CH4
Channel 5 . . . CH5
Channel 6 . . . Satellite/Cable
Channel 7 . . . VCR

Basic functions

Switching your TV on from Standby

Press the **STANDBY** button on the remote control. Press the button again to switch the TV back into standby. This will not switch your TV off completely. To switch your TV off press the **POWER** button on the front of your TV and un-plug the TV from the wall.

Changing channels

Press the **NUMBER** buttons to go directly to a channel e.g. press the number **1** button to go to channel 1. For a channel number above 9 e.g. channel 12 press the **-/--** button followed by the number **1** and **2** buttons.

To move up and down the channels in order press the **PR▲** or **PR▼** buttons.

Adjusting the volume

Press the **VOL▶** button to increase the volume. Press the **VOL◀** button to decrease the volume.

Selecting Teletext

Press the **TV/TX** button to select Teletext. Press the **MIX** button to select MIX. This will let you read the Teletext and still see the picture on your TV. Press the **TV/TX** button, the text will disappear and just the picture will be seen on the screen.