

FINLUX

43-FUC-5620

colour television



Owner's manual

HDMI™
HIGH-DEFINITION MULTIMEDIA INTERFACE

Contents

Safety Information.....	2
Markings on the Product.....	2
Environmental Information.....	3
Features.....	4
Accessories Included.....	4
Standby Notifications.....	4
TV Control Switch & Operation.....	4
Inserting the Batteries into the Remote.....	5
Connect Power.....	5
Antenna Connection.....	5
License Notification.....	6
Specification.....	6
Remote Control.....	7
Connections.....	8
Switching On/Off.....	9
First Time Installation.....	9
Media Playback via USB Input.....	9
Media Browser Menu.....	10
FollowMe TV (if available).....	10
CEC and CEC RC Passthrough.....	10
E-Manual (if available).....	10
General TV Operation.....	15
Using the Channel List.....	15
Configuring Parental Settings.....	15
Electronic Programme Guide (EPG).....	15
Teletext Services.....	16
Software Upgrade.....	16
Troubleshooting & Tips.....	16
PC Input/Typical Display Modes.....	17
AV and HDMI Signal Compatibility.....	17
Supported Video File Formats for USB Mode.....	18
Supported Picture File Formats for USB Mode.....	18
Supported Audio File Formats for USB Mode.....	19
Supported Subtitle File Formats for USB Mode.....	20
Supported DVI Resolutions.....	20
Internet Portal.....	24
Freeview Play Platform.....	24
Accessing Freeview Play catch-up TV services.....	25
Internet Browser.....	25
Smart Centre.....	26
Important Instructions.....	26

Safety Information



CAUTION: TO REDUCE THE RISK OF ELECTRIC SHOCK DO NOT REMOVE COVER (OR BACK). NO USER-SERVICEABLE PARTS INSIDE. REFER SERVICING TO QUALIFIED SERVICE PERSONNEL.

In extreme weather (storms, lightning) and long inactivity periods (going on holiday) disconnect the TV set from the mains.

The mains plug is used to disconnect TV set from the mains and therefore it must remain readily operable. If the TV set is not disconnected electrically from the mains, the device will still draw power for all situations even if the TV is in standby mode or switched off.

Note: Follow the on screen instructions for operating the related features.

IMPORTANT - Please read these instructions fully before installing or operating

WARNING: Never let people (including children) with reduced physical, sensory or mental capabilities or lack of experience and / or knowledge use electrical devices unsupervised.

Use this TV set at an altitude of less than 2000 meters above the sea level, in dry locations and in regions with moderate or tropical climates.

The TV set is intended for household and similar general use but may also be used in public places.

For ventilation purposes, leave at least 5cm of free space around the TV.

The ventilation should not be impeded by covering or blocking the ventilation openings with items, such as newspapers, table-cloths, curtains, etc.

The power cord plug should be easily accessible. Do not place the TV, for example, on the floor or on a table. Always unplug the TV from the power cord by pulling the plug, do not unplug the TV by pulling the power cord.

Never touch the power cord/plug with wet hands as this could cause a short circuit or electric shock. Never make a knot in the power cord or tie it with other cords. When damaged it must be replaced, this should only be done by qualified personnel.

Do not expose the TV to dripping or splashing of liquids and do not place objects filled with liquids, such as vases, cups, etc. on or over the TV (e.g., on shelves above the unit).

Do not expose the TV to direct sunlight or do not place open flames such as lit candles on the top of or near the TV.

- Do not place any heat sources such as electric heaters, radiators, etc. near the TV set.
- Do not place the TV on the floor and inclined surfaces.
- To avoid danger of suffocation, keep plastic bags out of the reach of the babies, children and domestic animals.
- Carefully attach the stand to the TV. If the stand is provided with screws, tighten the screws firmly to prevent the TV from tilting. Do not over-tighten the screws and mount the stand rubbers properly.
- Do not dispose of the batteries in fire or with hazardous or flammable materials.

Warning: Batteries must not be exposed to excessive heat such as sunshine, fire or the like.

	Caution	Serious injury or death risk
	Risk of electric shock	Dangerous voltage risk
	Maintenance	Important maintenance component

Markings on the Product

The following symbols are used on the product as a marker for restrictions and precautions and safety instructions. Each explanation shall be considered where the product bears related marking only. Note such information for security reasons.

Class II Equipment: This appliance is designed in such a way that it does not require a safety connection to electrical earth.

Class II Equipment With Functional Earthing: This appliance is designed in such a way that it does not require a safety connection to electrical earth, the earth connection is used for functional purposes.

Protective Earth Connection: The marked terminal is intended for connection of the protective earthing conductor associated with the supply wiring.

Hazardous Live Terminal: The marked terminal(s) is/are hazardous live under normal operating conditions.

Caution (See Operating Instructions): The marked area(s) contain(s) user replaceable coin or button cell batteries.

Class 1 Laser Product: This product contains Class 1 laser source that is safe under reasonably foreseeable conditions of operation.



WARNING

Do not ingest the battery. Chemical Burn Hazard
This product or the accessories supplied with the product may contain a coin cell battery. If the coin cell battery is swallowed, it can cause severe internal burns in just 2 hours and can lead to death.
Keep new and used batteries away from children. If the battery compartment does not close securely, stop using the product and keep it away from children.

If you think batteries might have been swallowed or placed inside any part of the body, seek immediate medical attention.

WARNING

Never place a television set in unstable or inclined locations. A television set may fall, causing serious personal injury or death. Many injuries, particularly to children, can be avoided by taking simple precautions such as:

- Using cabinets or stands recommended by the manufacturer of the television set.
- Only using furniture that can safely support the television set.
- Ensuring the television set is not overhanging the edge of the supporting furniture.

• Not placing the television set on tall furniture (for example, cupboards or bookcases) without anchoring both the furniture and the television set to a suitable support.

• Not standing the television set on cloth or other materials placed between the television and supporting furniture.

• Educating children about the dangers of climbing on furniture to reach the television set or its controls. If your existing television set is being retained and reallocated, the same considerations as above should be applied.

WALL MOUNTING WARNINGS

Read the instructions before mounting your TV on the wall.

- The wall mount kit is optional. You can obtain from your local dealer, if not supplied with your TV.
- Do not install the TV on a ceiling or on an inclined wall.
- Use the specified wall mounting screws and other accessories.
- Tighten the wall mounting screws firmly to prevent the TV from falling. Do not over-tighten the screws.

WARNING

Apparatus connected to the protective earthing of the building installation through the MANS connection or through other apparatus with a connection to protective earthing – and to a television distribution system using coaxial cable, may in some circumstances create a fire hazard. Connection to a television distribution system has therefore to be provided through a device providing electrical isolation below a certain frequency range (galvanic isolator, see EN 60728-11)

Environmental Information

This television is designed to be environment friendly. To reduce energy consumption, you can follow these steps:

• If you set the **Energy Saving** to **Minimum**, **Medium**, **Maximum** or **Auto**, the TV will reduce the energy consumption accordingly. If you like to set the **Backlight** to a fixed value set as **Custom** and adjust the **Backlight** (located under the **Energy Saving** setting) manually using Left or Right buttons on the remote. Set as **Off** to turn this setting off.

Note: Available **Energy Saving** options may differ depending on the selected **Mode** in the **System-Picture** menu.

The **Energy Saving** settings can be found in the **System-Picture** menu. Note that some picture settings will be unavailable to be changed.

If pressed Right button while **Auto** option is selected or Left button while **Custom** option is selected, **Screen** will be off in 15 seconds, message will be displayed on the screen. Select **Proceed** and press **OK** to turn the screen off immediately. If you don't press any button, the screen will be off in 15 seconds. Press any button on the remote or on the TV to turn the screen on again.

Note: Screen Off option is not available if the Mode is set to Game.

When the TV is not in use, please switch off or disconnect the TV from the mains plug. This will also reduce energy consumption.

Features

- TV supports Ultra HD (Ultra High Definition - also known as 4K) which provides resolution of 3840 x 2160 (4K2K). It equals 4 times the resolution of Full HD TV by doubling the pixel count of the Full HD TV both horizontally and vertically. Ultra HD contents are supported from HDMI, USB inputs and over DVB-T2 and DVB-S2 broadcasts.

- Remote control colour TV
- Fully integrated digital terrestrial TV (DVB-T: T2)
- HDMI inputs to connect other devices with HDMI sockets

- OSD menu
- USB menu system
- Stereo sound system
- Headphone connection
- Automatic programming system
- Manual tuning
- Automatic power down after up to eight hours.
- Sleep timer
- Child lock
- Automatic sound mute when no transmission.

- A/V L (Automatic Volume Limiting)
- PLL (Frequency Search)
- PC input
- Game Mode (Optional)
- Picture off function
- Ethernet (LAN) for internet connectivity and service
- 802.11 a/b/g/n built in WiFi Support
- Audio Video Sharing

High Dynamic Range (HDR) / Hybrid Log-Gamma (HLG)

Using this feature the TV can reproduce greater dynamic range of luminosity by capturing and then combining several picture quality thanks to HDR/HLG promises better picture quality thanks to brighter, more realistic highlights, more realistic color and other improvements. It delivers the look that filmmakers intended to achieve, showing the hidden areas of dark shadows and sunlight with full clarity, colour and detail. HDR/HLG contents are supported via native and portal applications. HDMI, USB inputs and over DVB-S broadcasts. Set the related HDMI source input as **Enhanced** from the **Sources** option

in the **Settings** menu in order to watch HDR/HLG images; if the HDR/HLG content is received through an HDMI input. The source device should also be at least HDMI 2.0a compatible in this case.

Accessories included

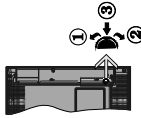
- Remote Control
- Instruction Book
- Quick Start Guide

Standby Notifications

If the TV does not receive any input signal (e.g. from an aerial or HDMI source) for 3 minutes, it will go into standby. When you next switch-on, the following message will be displayed: "TV switched to stand-by mode automatically because there was no signal for a long time." Press **OK** to continue.

The **Auto TV OFF** option (in the **System-Settings-More** menu) may be set to 1 and 8 hours by default. If this setting is not set as **Off** and the TV has been left on and not been operated during the set time, it will switch into standby mode after the set time has expired. When you next switch-on the TV, the following message will be displayed: "TV switched to stand-by mode automatically because no operation was made for a long time." Press **OK** to continue.

TV Control Switch & Operation



1. Up direction
2. Down direction
3. Volume / Info / Sources List selection and Standby-On switch

The Control button allows you to control the Volume / Programme / Source and Standby-On functions of the TV.

To change volume: Increase the volume by pushing the button up. Decrease the volume by pushing the button down.

To change channel: Press the middle of the button in, the information banner will appear on the screen. Scroll through the stored channels by pushing the button up or down.

To change source: Press the middle of the button in twice (for the second time in total), the source list will appear on the screen. Scroll through the available sources by pushing the button up or down.

To turn the TV off: Press the middle of the button in and hold it down for a few seconds, the TV will turn into standby mode.

To turn on the TV: Press the middle of the button in, the TV will turn on.

Notes:

- If you turn the TV off, this circle starts again beginning with the volume setting.
- Main menu OSD cannot be displayed via control button.

Operation with the Remote Control

Press the **Menu** button on your remote control to display main menu screen. Use the directional buttons to select a menu tab and press **OK** to enter. Use the directional buttons again to select or set an item. Press **Return/Back** or **Menu** button to quit a menu screen.

Input Selection

Once you have connected external systems to your TV, you can switch to different input sources. Press the **Source** button on your remote control consecutively to select the different sources.

Changing Channels and Volume

You can change the channel, and adjust the volume by using the **Volume +/-** and **Programme +/-** buttons on the remote.

Inserting the Batteries into the Remote

Remove the screw that secures the battery compartment cover on the back side of the remote control first. Remove the cover gently. Insert two AAA batteries. Make sure the (+) and (-) signs match (observe correct polarity). Do not mix old and new batteries. Replace only with same or equivalent type. Place the cover back on. Then screw the cover back on again.



Connect Power

IMPORTANT: The TV set is designed to operate on 220-240V AC, 50 Hz socket. After unpacking, allow the TV set to reach the ambient room temperature before you connect the set to the mains. Plug the power cable to the mains socket outlet.

Antenna Connection
Connect the aerial plug to the AERIAL INPUT (ANT) socket located on the rear side of the TV.

Rear side of the TV



License Notification

The terms HDMI and HDMI High-Definition Multimedia Interface, and the HDMI Logo are trademarks or registered trademarks of HDMI Licensing Administrator, Inc. in the United States and other countries.



Manufactured under license from Dolby Laboratories, Dolby, Dolby Audio and the double-D symbol are trademarks of Dolby Laboratories.

For DTS patents, see <http://patents.dts.com>. Manufactured under license from DTS Licensing Limited. DTS, the Symbol, & DTS and the Symbol Together are registered trademarks, and DTS TrueSurround is a trademark of DTS, Inc. © DTS, Inc. All Rights Reserved.



For DTS patents, see <http://patents.dts.com>. Manufactured under license from DTS Licensing Limited. DTS, DTS-HD, the Symbol, & DTS or DTS-HD and the Symbol Together are registered trademarks of DTS, Inc. © DTS, Inc. All Rights Reserved.



This product contains technology subject to certain intellectual property rights of Microsoft. Use or distribution of this technology outside of this product is prohibited without the appropriate license(s) from Microsoft.

Content owners use Microsoft PlayReady™ content access technology to protect their intellectual property, including copyrighted content. This device uses PlayReady technology to access PlayReady-protected content and/or WMDRM-protected content. If the device fails to properly enforce restrictions on content usage, content owners may require Microsoft to revoke the device's ability to consume PlayReady-protected content. Revocation should not affect unprotected content or content protected by other content access technologies. Content owners may require you to upgrade PlayReady to access their content. If you decline an upgrade, you will not be able to access content that requires the upgrade.

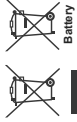
Information for Users on Disposal of Old Equipment and Batteries

European Union only)

Equipment bearing these symbols should not be disposed as general household waste.

You should look for appropriate recycling facilities and systems for the disposal of these products.

Notice: The sign Pb below the symbol for batteries indicates that this battery contains lead.



Battery

Products

Specification

TV Broadcasting	PAL BG/DK/LL SEC-AM/BDK
Receiving Channels	VHF (BAND III) - UHF (BAND U) - HYPERBAND
Digital Reception	Fully integrated digital terrestrial TV (DVB-T) (DVB-T2 compliant)
Number of Preset Channels	1.000
Channel Indicator	On Screen Display
RF Operating Input	75 Ohm (unbalanced)
Operating Voltage	220-240V AC, 50Hz
Audio	DTS TrueSurround HD
Audio Output Power (WRRMS) (10% THD)	2 x 8
Power Consumption (W)	120
Networked Standby (W)	< 3
TV Dimensions DxDxH (with foot) (mm)	250 x 974 x 572
TV Dimensions DxDxH (without foot) (mm)	63/66 x 974 x 653
Display	43"
Operation temperature and operation humidity	0°C up to 40°C, 85% humidity max.

Wireless LAN Transmitter Specifications

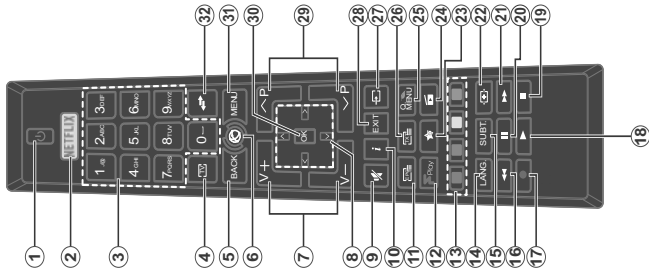
Frequency Ranges	Max Output Power
2400 - 2483.5 MHz (CH1-CH13)	< 100 mW
5150 - 5250 MHz (CH36 - CH48)	< 200 mW
5250 - 5350 MHz (CH52 - CH64)	< 200 mW
5470 - 5725 MHz (CH100 - CH140)	< 200 mW

Country Restrictions

This device is intended for home and office use in all EU countries (and other countries following the relevant EU directive) without any limitation except for the countries mentioned below.

Country	Restriction
Bulgaria	General authorization required for outdoor use and public service
France	In-door use only for 2454-2483.5 MHz
Italy	If used outside of own premises, general authorization is required
Greece	In-door use only for 5470 MHz to 5725 MHz band
Luxembourg	General authorization required for network and service supply (not for spectrum)
Norway	Radio transmission is prohibited for the geographical area within a radius of 2.0 km from the centre of Ny-Alesund
Russian Federation	In-door use only

The requirements for any country may change at any time. It's recommended that user checks with local authorities for the current status of their national regulations for both 2.4 GHz and 5 GHz wireless LANs.



(*) MY BUTTON:

This button may have a default function depending on the model. However you can set a special function to this button by pressing on it for five seconds when on a desired source or channel. A confirmation message will be displayed on the screen. Now the MY BUTTON is associated with the selected function.

Note that if you perform **First Time Installation**, MY BUTTON will return to its default function.

1. **Standby:** Switches On / Off the TV
2. **Netflix:** Launches the Netflix application
3. **Number buttons:** Switches the channel, enters a number or enters in the text box on the screen.
4. **TV:** Switches to TV Source
5. **Back/Return:** Returns to previous screen, opens index page (in TXT mode)
6. **Internet:** Opens the portal page, where you can reach many related applications
7. **Volume +/-:**
8. **Directional buttons:** Helps navigate menus, content and subpages in TXT mode when pressed Right or Left
9. **Mute:** Completely turns off the volume of the TV
10. **Info:** Displays information about on-screen content, show/hide information (local and TXT mode)
11. **ERG (Electronic programme guide):** Displays the electronic programme guide
12. **Freeview Play:** Connects to the Freeview Play platform where you can access available catch-up TV services
13. **Coloured Buttons:** Follow the on-screen instructions for coloured button functions
14. **Language:** Switches among sound modes (analogue TV), displays and changes audio/subtitle language (digital TV, where available)
15. **Subtitles:** Turns subtitles on and off (where available)
16. **Rapid reverse:** Moves frames backwards in media such as movies
17. **No Function**
18. **Play:** Starts to play selected media
19. **Stop:** Stops the media being played
20. **Pause:** Pauses the media being played as movies
21. **Rapid advance:** Moves frames forward in media such as movies
22. **Screen:** Changes the aspect ratio of the screen
23. **My button 1 (*)**
24. **Media browser:** Opens the media browsing screen
25. **Quick Menu:** Displays a list of menus for quick access
26. **Text:** Displays teletext (where available), press again to superimpose the teletext over a normal broadcast picture (mix sources)
27. **Source:** Shows all available broadcast and content sources
28. **Exit:** Closes and exits from displayed menus or returns to previous screen
29. **Programme +/-:**
30. **OK:** Confirms user selections, holds the page (in TXT mode), views channel list (DTV mode)
31. **Menu:** Displays TV menu channels or sources

Connections

Connector	Type	Cables	Device
	VGA Connection (back)		
	PCYPHP/ Audio Connection (back)		
	HDMI Connection (side/back)		
	SPDIF (Optical Out) Connection (back)		
	Back AV (Audio/Video) Connection (back)		
	Headphone Connection (side)		
	YPbPr Video Connection (back)		
	USB Connection (side)		
	CI Connection (side)		
	Ethernet Connection (bottom)		

NOTE: When connecting a device to your TV, you must use the AV inputs, you must use the connection cables to enable connection. See the illustrations on the left side. | You can use YPbPr to VGA cable to enable YPbPr to VGA cable (RGB / YPbPr) at the same time. | To enable PC/YPbPr audio, you will need to use the back audio inputs with a YPbPr/PC audio cable for audio connection. | When using the headphones, you must use the supplied, we recommend that you plug all your cables into the back of the TV before mounting on the wall. | Insert or remove the CI module only when the TV is powered off. | For more information, refer to the module instruction manual for details of the settings. | The Each USB input of your TV supports devices up to 500mA. Connecting devices that have current value above 500mA may damage the TV. | You must use an HDMI cable to your TV, you have to use only a shielded (high grade) HDMI cable to guarantee a sufficient immunity against parasitic frequency radiation. And HDMI cables are used to connect high definition signals, such as 4K contents, for trouble-free transmission.

If you want to connect a device to the TV, make sure that both the TV and the device are turned off before making any connection. After the connection is done, you can turn on the units and use them.

Switching On/Off

To Switch the TV On

Connect the power cord to a power source such as a wall socket (220-240V AC, 50 Hz).

To switch on the TV from standby mode either:

- Press the **Power** button on the remote control.
- Press the middle of the side function switch on the TV in.

To Switch the TV Off

Press the **Power** button on the remote control, or press the middle of the side function switch on the TV in and hold it down for a few seconds, the TV will switch into standby mode.

To power down the TV completely, unplug the power cord from the mains socket.

Note: When the TV is switched into standby mode, the standby LED can blink to indicate that features such as Standby Search, Over Air Download or Timer is active. The LED can also blink when you switch on the TV from standby mode.

First Time Installation

When turned on for the first time, the language selection screen is displayed. Select the desired language and press **OK**.

On the next screen, set your preferences using the directional buttons.

Note: Depending on the Country selection you may be asked to set and confirm a PIN at this point. The selected PIN cannot be 0000. You have to enter it if you are asked to enter a PIN for any menu operation later.

About Selecting Broadcast Type

Digital Aerial: If Digital Aerial broadcast search option is turned on, the TV will search for digital terrestrial broadcasts after other initial settings are completed.

You can activate **Store Mode** option at this point. This option will configure your TV's settings for store environment and depending on the TV model being used, the supported features of it may be displayed on the top of the screen as an info banner. This option is intended only for store use. It is recommended to select **Home Mode** for home use. This option will be displayed on the top of the screen as an info banner. This option will be turned off/on later.

Depending on the model of your TV and the country you are in, the TV may be shipped with a different set of options. Using this screen you can set your preferences. Highlight a feature and use **Left** and **Right** directional buttons to enable or disable. Read the related explanations displayed on the screen for each highlighted feature before making any changes. You can use **Programme +** buttons to scroll up and down to read the entire text. You will be able to change your preferences at any time later from the **System-Privacy Settings** menu, if the **Internet**

Connection option is disabled, Network/Internet

Press **OK** button on the remote control to continue.

Press the **Network/Internet Settings** menu will be displayed. If you confirm the previously displayed message asking whether you want to do the network settings. Please refer to **Connectivity** section to configure a wired or a wireless connection. After the settings are completed press **OK** button to continue.

To skip to the next step without doing anything select **No** and press the **OK** button when the message is displayed asking whether you want to do the network settings.

On the next screen you need to agree to the terms and conditions of Freewiew Play to make use of the related services. Scroll the page to read the entire text and press **OK** to confirm. Press **OK** on the **Yes** button. Highlight **Yes** and press **OK** on the **Yes** button to proceed without confirmation. For further requirements for Freewiew Play services refer to the **Freewiew Play Platform** section.

After the initial settings are completed TV will start to search for available broadcasts of the selected broadcast types.

After all the available stations are stored, scan results will be displayed. Press **OK** to continue. The **Edit Channel List** menu will be displayed next. You can edit the channel list according to your preferences or press the **Menu** button to quit and watch TV.

While the search continues a message may appear, asking whether you want to sort channels according to the LCN*. Select **Yes** and press **OK** to confirm. (*LCN is the Logical Channel Number system that organizes available broadcast channels in accordance with a recognizable channel number sequence (if available).

Note: Do not turn off the TV while initializing first time installation. Note that, some options may not be available depending on the country selection.

Media Playback via USB Input

You can connect 2.5" and 3.5" inch HDD with external power supply external hard disk drives or USB memory stick to your TV by using the USB inputs of the TV.

IMPORTANT! Back up the files on your storage devices before connecting them to the TV. Manufacturer will not be responsible for any file damage or data loss. Certain types of USB devices (e.g. MP3 Players) or USB hard disk drives/memory sticks may not be compatible with this TV. The TV supports FAT32 and NTFS disk formatting.

Wait a little while before each plugging and unplugging as the player may still be reading files. Failure to do so may cause physical damage to the USB driver and the USB device itself. Do not pull out your driver while playing a file.

You can use USB with your TV's USB inputs. External power supplied USB hubs are recommended in such a case.

It is recommended to use the TV's USB input(s) directly, if you are going to connect a USB hard disk.

Note: When viewing image files the **Media Browser** menu can only display 1000 image files stored on the connected USB device.

Media Browser Menu

You can play photos, music and movie files stored on a USB disk by connecting it to your TV. Connect a USB storage device to the TV. Press the **Media Browser** menu button while in the **Media Browser** mode will access the **Picture, Sound and Settings** menu options. Pressing the **Menu** button again will exit from this screen. You can set your **Media Browser** preferences by using the **Settings** menu.

Loop/Shuffle/Mode Operation	
Start playback with the Play button and activate	All files in the list will be continuously played in original order.
Start playback with the OK button and activate	The same file will be played continuously (repeat).
Start playback with the Play button and activate	All files in the list will be played once in random order.
Start playback with the Play button and activate	All files in the list will be continuously played in the same random order.

Custom Boot Up Logo

You can personalize your TV and see your favorite image or photo on the screen each time your TV boots up. To do this, copy your favorite image into a USB disk and open them from the **Media Browser** menu. Press **OK** to view it in full screen. **OK** confirmation message will be displayed. Select **Yes** and press **OK** again. If the image is suitable(*) you will see it on the screen during the TV's next boot up.

Note: If you perform a **First Time Installation** the TV will return to using the default logo, if any.

(* Images must have an aspect ratio between 4:3 to 16:9 and they must be in .jpeg, .png or .jpe file formats. The image cannot be set as boot logo, which's resolution doesn't appear on the info banner.

FollowMe TV (if available)

With your mobile device you can stream the current broadcast from your smart TV using the **FollowMe TV** feature. Install the appropriate Smart Center application to your mobile device. Start the application. For further information on using this feature refer to the instructions of the application you use.

Note: This application may not be compatible with all mobile devices. Both of the devices must be connected to the same network.

CEC and CEC RC Passthrough

This function allows to control the CEC-enabled devices, that are connected through HDMI ports by using the remote control of the TV.

The CEC option in the **System-Settings-More** menu should be set as **Enabled** at first. Press the **Source** button and select the HDMI input of the connected CEC device from the **Sources List** menu. When the CEC option in the **System-Settings-More** menu is in source menu with its own name instead of the connected HDMI ports name (such as DVD Player, Recorder 1, etc.).

The TV remote is automatically able to perform the main functions after the connected HDMI source has been selected.

To terminate this operation and control the TV via the remote again, press **Quick Menu** button on the remote. Highlight the **CEC RC Passthrough** and set as **Off** by pressing **Left** or **Right** button. This feature can also be enabled or disabled under the **System-Settings-More** menu.

The TV supports also ARC (Audio Return Channel) feature. This feature is an audio link meant to replace other cables between the TV and the audio system (AV receiver or speaker system).

When ARC is active, TV does not mute its other audio outputs automatically. So you need to decrease TV volume to zero manually, if you want to hear audio from connected audio device only (same as other optical or co-axial digital audio outputs). If you want to change connected device's volume level, you should select that device from the source list. In that case volume control keys are directed to connected audio device.

Note: ARC is supported only via the HDMI 1 input.

System Audio Control

Allows an Audio Amplifier/Receiver to be used with the TV. The volume can be controlled using the remote control of the TV. To activate this feature set the **Speakers** option in the **System-Settings-More** menu as **Amplifier**. The speakers will be muted and the audio of the watch content will be provided from the connected sound system.

Note: The audio device should support System Audio Control feature and CEC-enabled should be set as **Enabled**.

E-Manual (if available)

You can find instructions for your TV's features in the E-Manual.

To use E-Manual, press to the **Info** button while main menu is displayed on the screen and press **Quick Menu** button.

By using the directional buttons select a desired category. Every category includes different topics. Select a topic and press **OK** to read instructions. To close the E-Manual screen press the **Exit** or **Menu** button.

Note: The contents of the E-Manual may vary according to the model.

TV Menu Contents

System - Picture Menu Contents	System - Sound Menu Contents
<p>Mode You can change the picture mode to suit your preference or requirements. Picture mode can be set to one of these options: Cinema, Game (optional), Sports, Dynamic and Natural.</p> <p>Contrast Adjusts the light and dark values on the screen.</p> <p>Brightness Adjusts the brightness values on the screen.</p> <p>Sharpness Sets the sharpness values for the objects displayed on the screen.</p> <p>Colour Sets the colour value, adjusting the colours.</p> <p>Energy Saving For setting the Energy Saving to Custom, Off, Minimum, Medium, Maximum, Auto, Screen off. <i>Note: Available options may differ depending on the selected Mode.</i></p> <p>Backlight This setting controls the backlight level. The backlight function will be inactive if the Energy Saving is set to an option other than Custom.</p> <p>Advanced Settings You can change the dynamic contrast ratio to desired value.</p> <p>Dynamic Contrast If the signal is weak and the picture is noisy, use the Noise Reduction setting to reduce the amount of noise.</p> <p>Noise Reduction</p> <p>Colour Temp Sets the desired colour temperature value: Cool, Normal, Warm and Custom options are available.</p> <p>White Point If the Colour Temp option is set as Custom, this setting will be available. Increase the warmth or coolness of the picture by pressing Left or Right buttons.</p> <p>Picture Zoom Sets the desired image size format.</p> <p>Film Mode Films are recorded at a different number of frames per second to normal television programmes. Turn this feature on when you are watching films to see the fast motion scenes clearly.</p> <p>Skin Tone Skin tone can be changed between -5 and 5.</p> <p>Colour Shift Adjust the desired colour tone.</p> <p>HDMI Full Range While watching from a HDMI source, this feature will be visible. You can use this feature to enhance brightness in the picture.</p> <p>PC Position Appears only when the input source is set to VGAPC.</p> <p>Autoposition Automatically optimizes the display. Press OK to optimize.</p> <p>H Position This item shifts the image horizontally to the right hand side or left hand side of the screen.</p> <p>V Position This item shifts the image vertically towards the top or bottom of the screen.</p> <p>Dot Clock Dot Clock adjustments correct the interference that appears as vertical banding in dot intensive presentations like spreadsheets or paragraphs or text in smaller fonts.</p> <p>Phase Depending on the input source (computer etc.) you may see a hazy or noisy picture on the screen. You can use phase to get a clearer picture by trial and error.</p> <p>Reset Resets the picture settings to factory default settings (except Game mode).</p> <p><i>While in VGA (PC) mode, some items in Picture menu will be unavailable. Instead, VGA mode settings will be added to the Picture Settings while in PC mode.</i></p>	<p>Volume Adjusts the volume level.</p> <p>Equalizer Selects the equalizer mode. Custom settings can be made only when in User mode.</p> <p>Balance Adjusts whether the sound comes from the left or right speaker.</p> <p>Headphone Sets headphone volume. Please ensure before using headphones that the headphone volume is set to a low level, to prevent damage to your hearing.</p> <p>Sound Mode You can select a sound mode (if the viewed channel supports). Press OK to open the Audio Link menu screen. Using this screen you can discover and connect the sound devices to your TV wirelessly.</p> <p>Audio Link Sets the sound to obtain fixed output level between programmes.</p> <p>AVL (Automatic Volume Limiting) When you connect an external amplifier to your TV using the headphone jack, you can select this option as Lineout. If you have connected headphones to the TV, set this option as Headphone. Please ensure before using headphones that this menu item is set to Headphone. If it is set to Lineout, the output from the headphone socket will be set to maximum which could damage your hearing.</p> <p>Headphone/Lineout</p> <p>Dynamic Bass Enables or disables the DTS TruSurround HD.</p> <p>DTS TruSurround HD Enables or disables the DTS TruSurround HD.</p> <p>Digital Out Sets digital out audio type.</p>

System - Settings Menu Contents	Controls conditional access modules when available.
Language	You may set a different language depending on the broadcaster and the country.
Privacy Settings (*)	Manage your privacy privileges for smart TV related applications. Press OK to enter the menu and set according to your preferences.
Parental	Enter correct password to change parental settings. You can easily adjust Menu Lock , Maturity Lock , Child Lock or Guidance in this menu. You can also set a new PIN or change the Default CICAM PIN using the related options. <i>Note: Some menu options may not be available depending on the country selection in the First Time Installation. Default PIN can be set to 0000 or 1234. If you have defined the PIN as requested depending on the country selection during the First Time Installation use the PIN that you have defined.</i>
Timers	Sets sleep timer to turn off the TV after a certain time. Sets timers for selected programmes.
Date/Time	Sets date and time.
Sources	Enables or disables selected source options. There are Regular , Enhanced and Disabled options available for HDMI sources. Regular and Enhanced options are affecting the colour settings of the selected HDMI source. To be able to watch 4K images from an HDMI source related source setting should be set as Enhanced if the connected device is HDMI 2.0 compatible. Set as Regular if the connected device is HDMI 1.4 compatible. Set accordingly to enable or disable the related HDMI source by setting as Disabled .
Network/Internet Settings	Displays network/Internet settings.
Accessibility	Displays accessibility options of the TV.
Hard of Hearing	Enables any special feature sent from the broadcaster.
Audio Description	A narration track will be played for the blind or visually impaired audience. Press OK to see all available Audio Description menu options. This feature is available only if the broadcaster supports it.
Netflix	If this feature is supported by your TV, you can view your ESN(*) number and deactivate Netflix. <i>(*) ESN number is an unique ID number for Netflix, created especially to identify your TV.</i>
More	Displays other setting options of the TV.
Menu Timeout Standby LED	Changes timeout duration for menu screens. If set as Off , the standby LED will not light up when the TV is in standby mode.
Software Upgrade Application Version	Ensures that your TV has the latest firmware. Press OK to see the menu options. Displays current software version.
Subtitle Mode	This option is used to select which subtitle mode will be on the screen (DVB subtitle / Teletext subtitle) if both is available. Default value is DVB subtitle. This feature is available only for the country option of Norway.
Auto TV OFF	Sets the desired time for the TV to automatically go into standby mode when not being operated.
Store Mode	Selects this mode for store display purposes. Whilst Store Mode is enabled, some items in the TV menu may not be available.
Audio Video Sharing	Audio Video Sharing feature allows you to share files stored on your smartphone or tablet pc: if you have a compatible smartphone or tablet pc and the appropriate software is installed, you can share/play photos on your TV. See instructions of your sharing software for more information. Audio Video Sharing mode will not be available with internet portal feature.

Power Up Mode	This setting configures the power up mode preference. Last State and Standby options are available.
Virtual Remote	Enable or disable the virtual remote feature.
CEC	With this setting you can enable and disable CEC functionality completely. Press Left or Right button to enable or disable the feature.
CEC Auto Power On	This function allows the connected HDMI-CEC compatible devices to turn on the TV and switch to its input source automatically. Press Left or Right button to enable or disable the feature.
Speakers	To hear the TV audio from the connected compatible audio device set as Amplifier . You can use the remote control of the TV to control the volume of the audio device.
Smart Remote	Press OK to open the Smart Remote menu screen. Using this screen you can discover and connect the remote controller devices to your TV wirelessly.
Show All Cookies (*)	Displays all saved cookies.
Delete All Cookies (*)	Deletes all saved cookies.
OSS	Displays Open Source Software license information.
<i>(*) These features may not be available depending on the model of your TV and the selected country in the First Time Installation.</i>	
Installation Menu Contents	
Automatic channel scan (Return)	Displays automatic tuning options. Digital Aerial : Searches and stores aerial DVB stations.
Manual channel scan	This feature can be used for direct broadcast entry.
Network channel scan	Searches for the linked channels in the broadcast system. Digital Aerial : Searches for aerial network channels.
First time installation	Deletes all stored channels and settings, resets TV to factory settings.

General TV Operation

Using the Channel List

The TV sorts all stored stations in the Channel List. You can edit this channel list, set favourites, or set active stations to be listed by using the Channel List options. Press the OK/TV button to open the Channel List. You can filter the listed channels by pressing the Blue button or open the Edit Channel List menu by pressing the Green button in order to make advanced changes in the current list.

Managing the Favourite Lists

You can create four different lists of your favourite channels. Enter the Channel List in the main menu or press the Green button while the Channel List is displayed on the screen in order to open the Edit Channel List menu. Select the desired channel on the list. You can make multiple choices by pressing the Yellow button. Then press the OK button to open the Channel Edit Options menu and select Add/Remove Favourites option. Press the OK button again. Set the desired list option to On. The selected channels will be added to the list. In order to remove a channel or channels from a favourite list follow the same steps and set the desired list option to Off.

You can use the Filter function in the Edit Channel List menu to filter the channels in the Channel list permanently according to your preferences. Using this Filter option, you can set one of your four favourite lists to be displayed everytime the Channel list is opened. The filtering function in the Channel list menu will only filter the currently displayed Channel list in order to find a channel and tune in to it. These changes will not remain the next time the Channel list is opened if you don't save them. To save the changes on the list press the Red button after filtering while the Channel list is displayed on the screen.

Configuring Parental Settings

The Parental Settings menu options can be used to prohibit users from viewing of certain programmes, channels and using of menus. These settings are located in the System-Settings-Parental menu. To display parental lock menu options, a PIN number should be entered. After coding the correct PIN number, Parental Settings menu will be displayed. Menu Lock: This setting enables or disables access to all menus or installation menus of the TV.

Guidance: This setting enables or disables access some of the MHEG applications. Disabled applications can be released by entering the right PIN.

Set PIN: Defines a new PIN number.

Default CiCAM PIN: This option will appear as greyed out if no Ci module is inserted into the Ci slot of the

TV. You can change the default PIN of the Ci CAM using this option.

Note: Default PIN can be set to 0000 or 1234. If you have defined the PINs (as requested depending on the country selection) during the First Time Installation use the PIN that you have defined.

Some options may not be available depending on the country selection in the First Time Installation.

Electronic Programme Guide (EPG)

Some channels send information about their broadcast schedules. Press the Epg button to view the Programme Guide menu.

There are 3 different types of schedule layouts available. Now/Next Schedule, List Schedule and Now/Time Schedule. To switch between them follow the instructions on the bottom of the screen.

Timeline Schedule

Zoom (Yellow button): Press the Yellow button to see events in a wider time interval.

Filter (Blue button): Views filtering options.

Highlight Genre (Subtitles button): Displays Highlight Genre menu. Using this feature, you can search the programme guide database in accordance with the genre. Info available in the programme guide will be searched and results matching your criteria will be highlighted.

Options (OK button): Displays event options.

Event Details (Info button): Displays detailed information about selected programmes.

Next/Prev Day (Programme +/- buttons): Displays the programmes of previous or next day.

Search (Magnifying Glass button): Displays Guide Search menu.

Now (Blue button): Displays current event of the highlighted channel.

List Schedule (List button)

(*) In this layout option, only the events of the highlighted channel will be listed.

Prev. Time Slice (Red button): Displays the programmes of previous time slice.

Next/Prev Day (Programme +/- buttons): Displays the programmes of previous or next day.

Event Details (Info button): Displays detailed information about selected programmes.

Filter (Text button): Views filtering options.

Next Time Slice (Green button): Displays the programmes of next time slice.

Options (OK button): Displays event options.

Now/Next Schedule

Options (OK button): Displays event options.

Event Details (Info button): Displays detailed information about selected programmes.

Filter (Blue button): Views filtering options.

Programme Options

Use the directional buttons to highlight a programme and the OK button to display Event Options menu. The following options are available:

Select Channel: Using this option, you can switch to the selected channel.

Set Timer on Event / Delete Timer on Event: After you see a programme in the EPG Guide, the EPG Event option and press the OK button. You can set a timer for future programmes. To cancel an already set timer, highlight that programme and press the OK button. Then select Delete Timer on Event option. The timer will be cancelled.

Notes: You cannot switch to any other channel while there is an active timer on the current channel.

It is not possible to set timer for two or more individual events at the same time interval.

Integrated Catch-Up Services

You can enjoy Freeview Play catch-up TV services that work directly through the electronic programme guide (EPG). Whilst you are on a channel use the directional buttons to scroll back in time through the timeline-based EPG. You will see contents from last few days. Available catch-up contents may change according to broadcasters and will be marked with a play icon. Highlight the content you want to play back and press the OK button.

Make sure that your TV is connected to your home network. In order to use the catch-up services. For further information regarding this matter and other requirements for Freeview Play services refer to the Connectivity and Freeview Play Platform sections.

Teletext Services

Press the Text button to enter. Press again to activate mix mode, which allows you to see the teletext page and the TV broadcast at the same time. Press once more to exit. If available, sections in the teletext pages will become colour-coded and can be selected by pressing the coloured buttons. Follow the instructions displayed on the screen.

Digital Teletext

Press the Text button to view digital teletext information. Operate it with the coloured buttons, cursor buttons and the OK button. The operation method may differ depending on the contents of the digital teletext. Follow the instructions displayed on the teletext screen. When the Text button is pressed again, the TV returns to television broadcast.

BBC Red Button+ (RB+)

While watching BBC+ channels, press the Red button to access Red Button+ services provided by the BBC. On the opening page you can access to BBC's main services such as BBC iPlayer, BBC Sport, BBC Sport and many others. There are also links to the home

pages of the related applications available. Use the navigation buttons on the TV's remote control to move through the application. Press Exit button to close and exit.

Software Upgrade

Your TV is capable of finding and updating the firmware automatically via the broadcast signal or via Internet.

Software upgrade via broadcast signal via user interface
On the main menu select **Systems-Settings** and then **More**. Navigate to **Software-Upgrade** and press the OK button. In **Upgrade options** menu select **Scan for upgrade** and press OK button to check for a new software upgrade.

If a new upgrade is found, it starts to download the upgrade. After the download is completed the TV firm the upgrading about. Responding the TV by pressing the OK to continue with the reboot operation.

3 AM search and upgrade mode

Your TV will search for new upgrades at 3:00 o'clock if **Automatic scanning** option in the **Upgrade options** menu is set to **Enabled** and if the TV is connected to an aerial signal or Internet. If a new software is found and downloaded successfully, it will be installed at the next power on.

Note: Do not unplug the power cord while led is blinking during the reboot process. If the TV fails to come on after the upgrade, unplug, wait for two minutes then plug it back in.

Troubleshooting & Tips

TV will not turn on

Make sure the power cord is plugged in securely to wall outlet. Check if batteries are exhausted. Press the Power button on the TV.

Poor picture

- Check if you have selected the correct TV system.
- Low signal level can cause picture distortion. Please check antenna access.
- Check if you have entered the correct channel frequency if you have done manual tuning.
- The picture quality may degrade when two devices are connected to the TV at the same time. In such a case, disconnect one of the devices.

No picture

- This means your TV is not receiving any transmission. Make sure the correct source has been selected.
- Is the antenna connected properly?
- Is the antenna cable damaged?
- Are suitable plugs used to connect the antenna?
- If you are in doubt, consult your dealer.

No sound

- Check if the TV is muted. Press the **Mute** button or increase the volume to check.
- Sound may be coming from only one speaker. Check the balance settings from **Sound menu**.

Remote control - no operation

- The batteries may be exhausted. Replace the batteries.

Input sources - can not be selected

- If you cannot select an input source, it is possible that no device is connected. If not;
- Check the AV cables, and connections if you are trying to switch to the input source dedicated to the connected device.

PC input Typical Display Modes

The following table is an illustration of some of the typical video display modes. Your TV may not support all resolutions.

Index	Resolution	Frequency
1	640x350	60Hz
2	640x480	60Hz
3	640x480	75Hz
4	640x480	75Hz
5	800x600	56Hz
6	800x600	60Hz
7	800x600	75Hz
8	1024x768	60Hz
9	1024x768	60Hz
10	1024x768	70Hz
11	1024x768	75Hz
12	1024x768	85Hz
13	1152x864	75Hz
14	1280x768	60Hz
15	1280x768	60Hz
16	1280x768	60Hz
17	1280x660	75Hz
18	1280x1024	60Hz
19	1280x1024	75Hz
20	1360x768	60Hz
21	1360x768	60Hz
22	1400x1050	59Hz
23	1400x1050	60Hz
24	1400x1050	75Hz
25	1440x900	60Hz
26	1440x900	75Hz
27	1600x1200	60Hz
28	1680x1050	59Hz
29	1680x1050	60Hz
30	1720x1050	60Hz

(K: Not Available, O: Available)

In some cases a signal on the TV may not be displayed properly. The problem may be an inconsistency with standards from the source equipment (DVD, Set-top box, etc.). If you do experience such a problem please contact your dealer and also the manufacturer of the source equipment.

Supported Video File Formats for USB Mode

Video Codec	Resolution	Bit Rate	Container
MPEG 1/2	1080P@2@30fps, 1080P@60fps	40Mbps	MPEG program stream (.DAT, .VOB, .MPG, .MPEG), MPEG transport stream (.ts, .tp, .ip), MP4 (.mp4, .mov), 3GPP (.3gpp, .3gp), AVI (.avi), MKV (.mkv), ASF (.asf)
MPEG4			MPEG program stream (.MPG, .MPEG), MP4 (.mp4, .mov), 3GPP (.3gpp, .3gp), AVI (.avi), MKV (.mkv), ASF (.asf)
XviD			MP4 (.mp4, .mov), AVI (.avi), MKV (.mkv), ASF (.asf)
Screenom H.263			FLV (.flv), AVI (.avi), SWF (.swf)
H.263			MP4 (.mp4, .mov), 3GPP (.3gpp, .3gp), AVI (.avi), MKV (.mkv)
H.264			FLV (.flv), MP4 (.mp4, .mov), 3GPP (.3gpp, .3gp), MPEG transport stream (.ts, .tp, .ip), ASF (.asf), AVI (.avi), MKV (.mkv)
Motion JPEG	720P@30fps	135Mbps	AVI (.avi), 3GPP (.3gpp, .3gp), MP4 (.mp4, .mov), MKV (.mkv), ASF (.asf)
VP8	1080P@30fps	10Mbps	MKV (.mkv), WebM (.webm)
	1080P@60fps	20Mbps	MKV (.mkv), WebM (.webm)
HEVCH.265	4K2K@60fps	100Mbps	MP4 (.mp4, .mov), MKV (.mkv), MPEG transport stream (.ts, .tp, .ip)
	1080P@60fps	50Mbps	MP4 (.mp4, .mov), MKV (.mkv), MPEG transport stream (.ts, .tp, .ip), 3GPP (.3gpp, .3gp)
VP9	4K2K@30fps	100Mbps	MKV (.mkv), WebM (.webm)

Supported Picture File Formats for USB Mode

Image	Photo	Resolution (width x height)	Remark
JPEG	Basic-line Progressive	15360x8640 1024x768	
PNG	Non-Interface Interface	9600x6400 1200x800	The limit for max resolution depends on DRAM size
BMP		9600x6400	

Supported Audio File Formats for USB Mode

Audio Codec	Sample rate	Bit Rate	Container
MPEG1/2 Layer1	16KHz ~ 48KHz	32Kbps ~ 44.8Kbps	MP3 (mp3), AVI (.avi), ASF (.asf), Matroska (.mkv, .mka), MPEG transport stream (.ts, .trp, .tp), MPEG program stream (.DAT, .VOB, .MPG, .MPEG), WAV (.wav)
MPEG1/2 Layer2	16KHz ~ 48KHz	8Kbps ~ 36.4Kbps	MP3 (mp3), AVI (.avi), ASF (.asf), Matroska (.mkv, .mka), MPEG transport stream (.ts, .trp, .tp), MPEG program stream (.DAT, .VOB, .MPG, .MPEG), WAV (.wav)
MPEG1/2 Layer3	16KHz ~ 48KHz	8Kbps ~ 32.0Kbps	MP3 (mp3), AVI (.avi), ASF (.asf), Matroska (.mkv, .mka), 3GPP (.3gpp, .3gp), MP4 (.mov, .m4a), MPEG transport stream (.ts, .trp, .tp), MPEG program stream (.DAT, .VOB, .MPG, .MPEG), FLV (.flv), WAV (.wav), SWF (.swf)
AC3	32KHz, 44.1KHz, 48KHz	32Kbps ~ 64Kbps	AC3 (.ac3), AVI (.avi), Matroska (.mkv, .mka), 3GPP (.3gpp, .3gp), MP4 (.mov, .m4a), MPEG transport stream (.ts, .trp, .tp), MPEG program stream (.DAT, .VOB, .MPG, .MPEG)
EAC3	32KHz, 44.1KHz, 48KHz	32Kbps ~ 6 Mbps	EAC3 (.eac3), 3GPP (.3gpp, .3gp), MP4 (.mp4, .mov, .m4a), MPEG transport stream (.ts, .trp, .tp), MPEG program stream (.DAT, .VOB, .MPG, .MPEG)
AAAC, HEAAC	8KHz ~ 48KHz		AAAC (.aac), AVI (.avi), Matroska (.mkv, .mka), 3GPP (.3gpp, .3gp), MP4 (.mov, .m4a), MPEG transport stream (.ts, .trp, .tp), MPEG program stream (.DAT, .VOB, .MPG, .MPEG), FLV (.flv), RM (.ra)
WMA	8KHz ~ 48KHz	128bps ~ 320Kbps	ASF (.wma, .asf), AVI (.avi), Matroska (.mkv, .mka)
WMA 10 Pro.M0	48KHz	< 192Kbps	
WMA 10 Pro.M1	48KHz	< 384Kbps	
WMA 10 Pro.M2	96KHz	< 768Kbps	
GT 11 A/mu-law	8KHz	64Kbps ~ 128Kbps	WAV (.wav), AVI (.avi), Matroska (.mkv, .mka), 3GPP (.3gpp, .3gp), MP4 (.mp4, .mov, .m4a)
LBR (cook)	8KHz, 11.025KHz, 22.05KHz, 44.1KHz	6Kbps ~ 128Kbps	RM (.ra)
FLAC	8KHz~96KHz	< 1.6Mbps	Matroska (.mkv, .mka)

Supported Subtitle File Formats for USB Mode

Internal Subtitles		
Extension	Container	Subtitle Code
.dat, .mpg, .mpeg, .vob	MPG, MPEG	DVD Subtitle
.ts, .trp, .tp	TS	DVD Subtitle
.mp4	MP4	DVD Subtitle UTF-8 Plain Text
.mkv	MKV	ASS SRT UTF-8 Plain Text VobSub DVD Subtitle
.avi	AVI (1.0, 2.0), DMF0.1, 2	XSUB XSUB+
External Subtitles		
Extension	Subtitle Parser	Remark
.art	Subrip	
.ass, .ass	SubStation Alpha	
.sm	SAMI	
.sub	SubViewer MicroDVD	SubViewer 1.0 & 2.0 Only
.txt	DVDSubtitleSystem Sublox (VobSub) TMPPlayer	

Supported DV Resolutions

When connecting devices to your TV's connectors by using DVI converter cable(DVI to HDMI cable - not supplied), you can refer to the following resolution information.

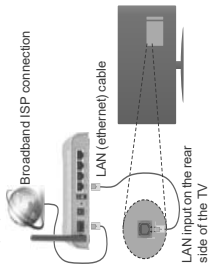
	59Hz	60Hz	66Hz	70Hz	72Hz	75Hz
640x480	☑	☑				☑
800x600	☑	☑				☑
1024x768	☑	☑	☑			☑
1280x768	☑	☑	☑			☑
1280x800	☑	☑				☑
1360x768	☑	☑				☑
1360x800	☑	☑				☑
1440x1024				☑		☑
1400x1050	☑	☑				☑
1600x900	☑	☑				☑
1620x1080	☑	☑				☑

Connectivity

Wired Connectivity

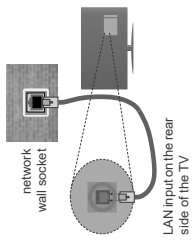
To connect to a Wired Network

- You must have a modem/router connected to an active broadband connection.
- Connect your TV to your modem/router via an ethernet cable. There is a LAN port at the rear (back) of your TV.



To configure wired settings please refer to the Network/Internet Settings section in the System-Settings Menu.

- You might be able to connect your TV to your LAN depending on your network's configuration. In such a case, use an ethernet cable to connect your TV directly to the network wall outlet.



Configuring Wired Device Settings

Network Type

The Network Type can be selected as **Wired Device**, **Wireless Device** or **Disabled**, in accordance with the active connection to the TV set. Select this as **Wired Device** if you are connecting via an ethernet cable.

Internet Speed Test

Highlight **Internet Speed Test** and press the **OK** button. TV will check the internet connection bandwidth and display the result when complete.

Advanced Settings

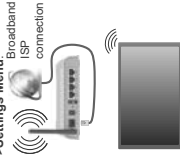
Highlight **Advanced Settings** and press the **OK** button. On the next screen you can change the IP and DNS settings of the TV. Highlight the desired one and press Left or Right button to change the setting from **Automatic** to **Manual**. Now you can enter the related IP and DNS values. Select the desired network using the arrow buttons and the remote. Press the **OK** button to save settings when complete.

Wireless Connectivity

To Connect to a Wireless Network

The TV cannot connect to the networks with a hidden SSID. To make your modem's SSID visible, you should change your SSID settings via the modem's software. To connect to a wireless LAN, you should perform the following steps:

- To configure your wireless settings please refer to the Network/Internet Settings section in the System-Settings Menu.



A Wireless-N router (IEEE 802.11a/b/g/n) with simultaneous 2.4 and 5 GHz bands is designed to increase bandwidth. These are optimized for smoother and faster HD video streaming, file transfers and wireless gaming.

- The frequency and channel differ depending on the area.
- The transmission speed differs depending on the distance and number of obstructions between the transmission products, the configuration of these products, the radio wave conditions, the line traffic and the products that you use. The transmission may also be cut off or may get disconnected depending on the radio wave conditions, DECT phones or any other WiFi 11b appliances. The standard values of other transmission speeds are the typical maximum values for the data transmission. They are not the actual speeds of data transmission.
- The location where the transmission is most effective differs depending on the usage environment.

The Wireless feature of the TV supports 802.11 a,b,g & n type modes. We highly recommend that you use IEEE 802.11n mode for better performance in order to avoid any possible problems while watching videos.

- You must change your modem's SSID when there are any other modems around with the same SSID. You can encounter connection problems otherwise. Use a wired connection if you experience problems with a wireless connection.

Configuring Wireless Settings

Open the **Network/Internet Settings** menu and select **Network Type** as **Wireless Device** to start connection process.

The TV will scan the wireless networks automatically. A list of available networks will be displayed. Please select your desired network from the list.

Note: If the modem supports N mode, you should set N mode settings.

If the selected network is protected with a password, please connect your TV by using the virtual keyboard. You can use this keyboard via the directional buttons and the **OK** button on the remote control.

Wait until the IP address is shown on the screen. This means that the connection is now established. To disconnect from a wireless network, highlight the **OK** type and press Left or Right buttons to set as **Disabled**.

Highlight **Internet Speed Test** and press the **OK** button to check the internet connection speed. Highlight **Advanced Settings** and press the **OK** button to open the advanced setting menu. Use directional and numeric buttons to set. Press the **OK** button to save settings when complete.

Other Information

The status of the connection will be displayed as **Connected** or **Not Connected** and the current IP address if a connection is established.

Connecting to your mobile device via WiFi

- If your mobile device has WiFi feature, you can connect it to your TV via a router. In order to access the content in your device. For this, your mobile device must have an appropriate sharing software.
- Connect to your router following the steps stated above in the **Wireless Connectivity** section.
- Afterwards, engage your mobile device with the router and then activate the sharing software on your mobile device. Then, select files that you want to share with your TV.
- If the connection is established correctly, you will be able to view the content of your mobile device via the **Media Browser** of your TV.
- Enter the **Media Browser** of your TV and the playback menu is displayed. Select the content of your mobile device, and press the **OK** button to continue.
- If available, you can download a virtual remote control application from the server of your mobile device application provider.

Note: This feature may not be supported on all mobile devices.

Wake On

Wake-on-LAN (WoL) and Wake-on-Wireless LAN (WoWiLAN) are standard features that allow a device to be turned on or woken up by a network message. The message is sent to the device by a program executed on a remote device connected to the same local area network, such as a smartphone.

Your TV is WoL and WoWiLAN compatible. To enable this feature set the **Wake On** option in the **Network/Internet Settings** menu as **On**. It is necessary that both the device, from which the network message will be sent to the TV, and the TV are connected to the same network. Wake On feature is only supported for Android OS devices and can only be used via YouTube and Netflix applications.

In order to use this feature the TV and the remote device should be connected at least once while the TV is on. If the TV is powered off, the connection should be reestablished, the next time it is switched on. Otherwise this feature will be unavailable. This is because, when the TV is switched into the standby mode.

Connecting Other Wireless Devices

Your TV supports another short range wireless connection technology too. Pairing is required before using these kind of wireless devices with the TV set. You should do the followings to pair your device with the TV:

- Set the device to pairing mode

- Start device discovery on the TV

Note: Refer to the user manual of the wireless device to learn how to set the device to pairing mode.

You can connect audio devices or remote controllers wirelessly to your TV. Unplug or switch off any other connected audio device in order for wireless connection feature to work correctly. For audio devices you should use **Audio Link** option in the **System-Sound** menu, for remote controllers the **System-Remote** option in the **System-Settings-More** menu. Select the menu option and press the **OK** button to open the related menu. Using this menu you can discover and connect the devices that use the same wireless technology and set it to use them. For example, you can discover and connect the **Smart Display**. A list of available wireless devices will be displayed. Select the device you want to connect with the list and press the **OK** button to connect. If **Device connected** message is displayed, the connection is successfully established. If the connection fails try it again.

Note: Wireless devices may operate within the same radio frequency range and may interfere with one another. To improve the performance of your wireless device place it at least 1 meter away from any other wireless devices.

Connectivity Troubleshooting

Wireless Network Not Available

- Ensure that all firewalls of your network allow the TV wireless connection.
- Try searching for wireless networks again, using the **Network/Internet Settings** menu screen.

If the wireless network does not function properly, try using the wired network in your home. Refer to the **Wired Connectivity** section for more information on the process.

If the TV does not function using the wired connection, check the modem (router), if the router does not have a problem, check the internet connection of your modem.

Connection is Slow

See the instruction book of your wireless modem to get information on the internal service area, connection speed, signal quality and other settings. You need to have a high speed connection for your modem.

Disruption during playback or slow reactions

You could try the following in such a case:

- Keep at least three meters distance from microwave ovens, mobile telephones, bluetooth devices or any other Wi-Fi compatible devices. Try changing the active channel on the WLAN router.

Internet Connection Not Available / Audio Video Sharing Not Working

If the MAC address (a unique identifier number) of your PC or modem has been permanently registered, it is possible that your TV might not connect to it. To solve this problem, you need to connect to the authenticated each time when you connect to the internet. This is a precaution against unauthorized access. Since your TV has its own MAC address, your internet service provider cannot validate the MAC address of your TV. For this reason, your TV cannot connect to the internet. Contact your internet service provider and request information on how to connect a different device, such as your TV, to the internet.

It is also possible that the connection may not be available due to a firewall problem. If your think this causes your problem, contact your internet service provider. A firewall might be the reason of a connectivity and discovery problem while using the TV in Audio Video Sharing mode or while browsing via Audio Video Sharing feature.

Invalid Domain

Ensure that you have already logged on to your PC with an authorized username/password and also ensure that your domain is active, prior to sharing any files in your media server program on your PC. If the domain is invalid, this might cause problems while browsing files in Audio Video Sharing mode.

Using Audio Video Sharing Network Service

Audio Video Sharing features are standard that access the features of digital electronics and makes them more convenient to use on a home network. This standard allows you to view and play photos, music and videos stored in the media server connected to your home network.

1. Server Software Installation

The Audio Video Sharing feature cannot be used if the server programme is not installed onto your PC or if the required media server software is not installed onto the companion device. Please prepare your PC with a proper server programme.

2. Connect to a Wired or Wireless Network

See the **Wireless/Wired Connectivity** chapters for detailed configuration information.

3. Play Shared Files via Media Browser

Select **Media Browser** by using the **directional buttons** from the main menu and press **OK**. The media browser will then be displayed.

Wireless Display

Wireless Display is a standard for streaming video and sound content by Wi-Fi Alliance. This feature provides the ability to use your TV as wireless display device.

Using with mobile devices

There are different standards which enable sharing of screens including graphical, video and audio content between your mobile device and TV.

Plug the wireless USB dongle to TV, first, if the TV doesn't have internal Wi-Fi feature.

Then press the **Source** button on the remote and switch to **Wireless Display** source.

A screen appears stating that the TV is ready for connection.

Open the sharing application on your mobile device. These applications are named differently for each brand, please refer to the instruction manual of your mobile device for detailed information.

Scan for devices. After you select your TV and connect, the screen of your device will be displayed on your TV.

Note: This feature can be used only if the mobile device supports this feature. Scanning and connecting processes differ according to the programme you use. Android based mobile devices should have the software version V4.2.2 and above.

Audio Video Sharing

Select the desired media type on the main media browser menu and press **OK** if sharing configurations are set properly. **Device Selection** screen will be displayed after selecting the desired media type. If available networks are found, they will be listed on this screen. Select media server or network that you want to connect to using the Up or Down buttons and

press **OK**. If you want to refresh the device list, press the **Green** button. You can press **Menu** to exit.

If you select the media type as **Videos** and choose a device from the selection menu, then select the folder you wish to view in the next screen and all the available video files will be listed.

To play other media types from this screen, you can go back to main **Media Browser** screen and select the media type as desired and then perform the network selection again. Or press the **Blue** button to switch to next media type quickly without changing the network. Refer to the **Media Browser** menu section for further information on the playback.

If a problem occurs with the network, please switch your television off at the wall socket and back on again. Trick mode and jump are not supported with the Audio Video Sharing feature.

PC+HDD/HD Player or any other devices that are compatible should be used with a wired connection for higher playback quality.

Use a LAN connection for quicker file sharing between other devices like computers.

Note: There may be some PCs which may not be able to utilize the Audio Video Sharing feature due to administrator and security settings (such as business PCs).

Internet Portal

HINT: Broadband internet connection is required for high quality viewing. You must set the installation option accordingly in the **First Time Installation** for proper operation of the internet portal.

Portal feature adds your TV a feature that allows you to connect a server on the internet and view the content provided by this server over internet connection. Portal feature allows you to view the music, video or web content with defined short-cuts. Whether you can view this content without interruption depends on the connection speed provided by your internet service provider.

Press the **Internet** button on your remote control to open internet portal page. You will see icons of the available applications and services on the portal screen. Use the directional buttons on your remote to select the desired one. You may view the desired content by pressing **OK** after selecting. Press **Back/Return** button to return back to the previous screen.

Moreover, you can access some features using the short-cut feature defined for the coloured or numeric buttons of your remote.

Press the **Exit** button to quit the internet portal mode.

PIP Window (depending on portal service)

Current source content will be displayed in the PIP window, if you switch to portal mode while on any active source.

If you switch to portal mode while watching TV channels, current programme will be displayed in the PIP window. You can change channels using **Programme 4+** buttons.

Notes:

• Possibly application dependent problems may be caused by the current service provider.

• Press **Esc** for other than the interface may be changed at any time without prior notice.

• Third party videos or services may change, be discontinued or restricted at any time.

iPlayer Application

You can access BBC iPlayer using your TV. Select BBC Player application among the portal options.

Press the **OK** button on your remote control to start the BBC iPlayer application.

Note: Broadband internet connection (minimum 2Mbps) is required for high quality viewing.

Playing a Programme via iPlayer

Select a programme and press **OK** button. The programme playback will begin.

You can press the **Pause** button to pause playback.

Press the **Play** button to resume the playback.

Use the **Stop** button to stop the playback.

Press the **Exit** button to exit iPlayer. Press the **Return** button to go back to the previous screen.

Note: Episode is unavailable message may be displayed on the screen if a problem occurs during the playback.

Searching a Programme

Highlight the **Search** bar using the navigation buttons and press the **OK** button. Use the virtual keyboard to type the letters. Select letters and press the **OK** button. The results will be listed below. Highlight the desired one and wait until the related videos appear. Select one among the videos using the directional buttons and press the **OK** button to start the playback.

Note: There are also some other BBC applications such as Sport and News available on the portal.

Freeview Play Platform

Freeview Play platform provides catch-up TV, and Demand services. Simply press the **Freeview Play** button on your remote control to connect to the Freeview Play platform.

The Freeview Play platform can also be accessed from the main menu or internet portal. Press **Menu** button and select **Internet**. Then highlight **Freeview Play** and press the **OK** button. Or open the internet portal of the TV and select the **Freeview Play** among available applications. Then press the **OK** button.

You will have to agree to the terms and conditions for Freeview Play services first. If you did not agree them during the **First Time Installation**, Highlight **Yes** and press **OK** on the remote to confirm and proceed.

Integrated TV Player applications will be displayed. Select one and press the **OK** button. Then select a content that you want to play back and press the **OK** button to watch.

Catch-up contents can also be accessed and played back directly from the TV Guide. Refer to the section **Electronic Programme Guide (EPG)** for more information.

Requirements

The Freeview Play services may only be used if the following requirements are fulfilled:

- Connecting the TV to the internet. A minimum broadband speed of 2Mbps is required for proper operation of catch up and on demand services.
- Agreeing to the terms and conditions of Freeview Play

Note: Freeview Play platform usage will count towards any monthly bandwidth allowances. Only selected channels provide 7-day catch up.

Accessing Freeview Play catch-up TV services via the Electronic Programme Guide (EPG)

Simply scroll backwards in your programme guide to access Freeview Play. Available catch-up content will be marked with a Play icon. Highlight the content and press the **OK** button and select play/back option.

Note: The content available on EPG is driven by TV channels themselves and will only display if the channel content is available. When you select a programme, Freeview Play will already launch the catch-up service. If you wish to watch Demand 5 on Freeview Play, please use the other options listed below to access the catch-up service.



2. Freeview Play via the 'Play button'

Click Freeview Play button on your remote control. This will bring up the Freeview Play portal, where you can choose the channel and programme to watch with ease.



3. Freeview Play via the TV's Smart Portal

Bring up the Smart Portal on your TV. Freeview Play will be one of the applications displayed on the first page. Once the Freeview Play icon is selected it will direct you to the same Freeview play portal seen above, where you can choose what programme you'd like to watch.



4. Freeview Play via the TV Menu

Click the Menu button, scroll down to 'Internet' and Freeview Play will be one of the options you can choose. You will see the familiar Freeview Play portal and be able to choose the channel and programme you like to watch.



Internet Browser

To use the internet browser, enter the portal first. Then launch the **Internet** application on the portal.

() The appearance of the internet browser may change.*

In the initial screen of the browser, the thumbnails of the predefined (if any) links to web sites available will be displayed as **Speed Dial** options along with the **Edit Speed Dial** and the **Add to Speed Dial** options. To navigate the web browser, use the directional buttons on the remote or a connected mouse. To see the browser options bar, move the cursor to the top of the page or press the **Back/Return** button. **History**, **Tabs** and **Bookmarks** options and the browser bar which contains previous/next buttons, the refresh button, the address/search bar, the **Speed Dial** and the **Opera** buttons are available.

To add a desired website to the **Speed Dial** list for quick access, move the cursor to the top of the page or press the **Back/Return** button. The browser bar will appear. Highlight the **Speed Dial** button and press the **OK** button. Then select **Add to Speed Dial** option and press the **OK** button. Fill in the blanks for **Name** and **Address**, highlight **OK** and press the **OK** button to add. Whilst you are on the site you wish to add to the **Speed Dial** list, highlight the **Opera** button and press the **OK** button. Then highlight **Add to Speed Dial** option in the submenu and press the **OK** button again. **Name** and **Address** will be filled automatically according to the site you are visiting. Highlight **OK** and press the **OK** button to add.

You can also use the **Opera** menu options to manage the browser. Highlight the **Opera** button and press the **OK** button to see available page specific and general options.

There are various ways to search or visit websites using the web browser.

Enter the address of a website(URL) into the search/address bar and highlight the **Submit** button on the virtual keyboard and press the **OK** button to visit the site.

Enter keywords into the search/address bar and highlight the **Submit** button on the virtual keyboard and press the **OK** button to start a search for the related websites.

Highlight a **Speed Dial** thumbnail and press the **OK** button to visit the related website.

Your TV is compatible with USB mice. Plug your mouse or wireless mouse adaptor into the USB input of your TV for easier and quicker navigation.

Some web pages include flash content. These are not supported by the browser.

Your TV does not support any download processes from the internet via the browser.

All sites on the internet might not be supported. According to the site, content problems may occur. In some circumstances video contents might not be able to be played.

Smart Centre

Smart Centre is a mobile application running on iOS and Android platforms. With your tablet or phone, you can easily stream your favourite live channels and programmes from your smart TV. Also, you can launch your portal applications, use your tablet as a remote control for your TV and share media files.

Note: Being able to use all features of this application depends on the features of your TV.

Getting Started

To use **Smart Centre** features, connections have to be done properly. To be able to use internet based

features, your modem/router must be connected to the internet.

IMPORTANT: Make sure the TV and mobile device are connected to the same network.

For media sharing feature **Audio Video Sharing** option should be enabled (if available). Press the **Menu** button on the remote, select **System>Settings>More** menu and press **OK**. Highlight **Audio Video Sharing** and change as **Enabled**. Your TV is ready to connect to your mobile device now.

Install the **Smart Centre** application onto your mobile device.

Start the smart centre application. If all connections are configured properly, you will see your TV's name on your mobile device. If your TV's name doesn't appear on the list, wait a while and tap on the **Refresh** widget. Select your TV from the list.

Mobile Device screen

On the main screen you can find tabs to access various features.

The application retrieves actual channel list from TV first when it starts.

MY CHANNELS: The programmes of first four channels from the channel list retrieved from the TV are shown. You can change the listed channels. Press on the channel thumbnail and hold. A list of channels will be displayed, and you can choose your desired channel to be replaced.

TV: You can watch content through the TV tab. In this mode you can navigate through the channel list retrieved from your TV and click on thumbnails to view the detail pages.

EPG: You can view the broadcast schedules of selected channel lists through this tab. You can also navigate through channels by pressing on the selected channel on the EPG grid. Please note that updating channel on the EPG information may take a while depending on your network and web service quality.

Note: Internet connection is required for WEB based EPG informations.

PORTAL: This tab displays the Portal applications in scrollable view. Unless **FollowMeTV** (if available) is active, the selected application will be displayed on your TV screen.

Note: Internet connection is required. This tab is disabled if a portal page is in use.

SETTINGS: Configure the application to your liking. You can change,

Auto-lock (Only in iOS): The screen of the device automatically turns off after a certain amount of time. Default is off, which means the screen will always stay on.

Auto-nable FollowMeTV: FollowMeTV function (if available) will start automatically when this setting is enabled. Default is disabled.

Auto-connection to TV: When enabled, your mobile device will automatically connect to last connected TV and skip the TV search screen.

Change TV (Only in iOS): Shows the currently connected TV. You can press on this setting to go to the TV search screen and change to a different TV.

Edit custom channel list: You can edit your custom channel list using this setting.

Choose channel list source: You can choose the channel list source to be used in the application. The options are "TV List" and "Custom List". Additionally you can activate "Remember my choice" option to set the selected channel list source as a constant choice. In this case if the selected source is available it will be used in the application.

Version NO: Displays the current version of the application.

Detail Page

To open detail page tap on a programme. On the detail page screen you can get detailed information of the programmes you select. There are "Details", "Cast&Crew" and "Videos" tabs to find on this page.

DETAILS: This tab provides summary and information about the selected programme. Also there are links to facebook and twitter pages of the programme selected.

CAST&CREW: Shows all the people contributed to the current programme.

VIDEOS: Provides videos on Youtube related to the selected programme.

Note: For some functions an internet connection may be required.

FollowMe TV Feature (if available)

Tap on the FOLLOW ME TV widget located at the bottom left of the screen of your mobile device to change the layout for FollowMe TV feature.

Tap the play icon to start streaming of the content from the TV to your mobile device. Available if your device is in your routers operation range.

Mirror-Mode

This mode of FollowMe TV feature is enabled by default and allows streaming the content from any other selected TV sources and Media Browser.

Notes:

Note that only digital (DVB-T/C/S) SD and HD channels are supported.

Multi-language audio support and subtitle on/off features are not functional.

The streaming performance may change depending on the quality of your connection.

Media Share Page

To access the Media Share widget tap on the Up-arrow on the bottom left side of the screen.

If the Media Share widget is pressed, a screen is displayed where you can select the media file type to share with your TV.

Note: Not all image file formats are supported. This function will not work if Audio Video Sharing feature is not supported.

Portal Launcher

To access the Portal Launcher widget tap on the Up-arrow on the bottom left side of the screen.

You can access the portal page by tapping on the Portal Launcher widget.

Note: Internet connection is required. This function will not work if a portal page is not in use.

Smart Remote Feature

You can use your mobile device as a remote control for your TV once it has connected to the TV. To use smart remote's full features tap on the Up-arrow on the bottom left side of the screen.

Voice Recognition

You can tap on the Microphone widget and manage your application, giving voice commands such as "Portal", "Volume Up/Down", "Programme Up/Down".

Note: This feature is only for android based devices available.

Keyboard Page

The keyboard page can be opened in two ways: by pressing the Keyboard widget on the application screen or automatically by receiving a command from the TV.

Requirements

1. Smart TV
2. Network connection
3. Mobile Device based on Android or IOS platform (Android OS 4.0 or higher; IOS 6 or higher version)
4. Smart Centre app (to be found on online application stores based on Android and IOS platforms)
5. Router modem
6. USB storage device in FAT32 format (required for PVR feature, if available)

Notes:

For Android devices, Normal (mp3), Lang (mp3) and Extra (mp3) screen sizes are supported. Devices with 5 or smaller screen sizes are not supported.

For IOS devices, all screen sizes are supported.

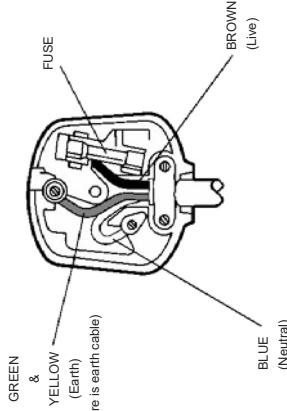
User interface of the Smart Centre application is subject to change according to version installed on your device.

Important Instructions

For your own safety read the following instructions carefully before attempting to connect this unit to the mains supply.

MAINS (AC) OPERATION

The wires in the mains lead are coloured in accordance with the following code :



IMPORTANT

As the colours of the wires in the mains lead of this appliance may not correspond with the coloured markings identifying the terminals in your plug, proceed as follows:

The wire which is coloured green and yellow must be connected to the terminal which is marked with the letter E, or by the earth symbol, or coloured green or green and yellow.

The wire which is coloured blue or black must be connected to the terminal which is marked with the letter N or coloured Black.

The wire which is coloured brown or red must be connected to the terminal which is marked with the letter L or coloured Red.

For continued protection against risk of fire, replace only with same type and rating of fuse (ASTA approved 5A 250VAC fuse).

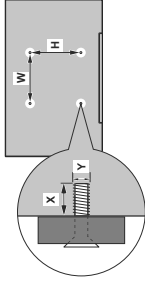
CAUTION

TO PREVENT ELECTRIC SHOCK, DISCONNECT FROM THE MAINS BEFORE REMOVING COVER. NO USER SERVICEABLE PARTS INSIDE. REFER SERVICING TO QUALIFIED SERVICE PERSONNEL.

SAFETY PRECAUTION

THIS EQUIPMENT MUST BE DISCONNECTED FROM THE MAINS WHEN NOT IN USE. DO NOT ALLOW THIS UNIT TO BE EXPOSED TO RAIN OR MOISTURE.

VESA WALL MOUNT MEASUREMENTS			
Hole Pattern Size (mm)	W	H	
	200	200	
Screw Sizes			
Length (X)	min. (mm)	10	
	max. (mm)	13	
Thread (Y)	M6		



Product Fiche	
Commercial Brand:FINLUX	
Product No.	10116052
Model No.	43-FUC-5620
Energy efficiency class	A+
Visible screen size (diagonal, approx.) (inch/cm)	43 inches 109 cm
On mode average power consumption (Watt)	54
Annual energy consumption (kWh/annum)	78
Standby power consumption (Watt)	0.5
Off mode power consumption (Watt)	0
Display resolution (px)	3840x2160

- TR:** İşbu belgede; VESTEL Elektronik Sanayi ve Ticaret A.Ş., telsiz ekipmanı tipi TFT IDTV 'nin 2014/53/AB sayılı direktife uygun olduğunu beyan eder. AB uygunluk beyanının tam metni internet adresinde mevcuttur: doc.vosshub.com
- EN:** Hereby, VESTEL Elektronik Sanayi ve Ticaret A.Ş., declares that the radio equipment type TFT IDTV is in compliance with Directive 2014/53/EU. The full text of the EU declaration of conformity is available at the following internet address: doc.vosshub.com
- BG:** С настоящото VESTEL Elektronik Sanayi ve Ticaret A.Ş., декларира, че този тип радиосъоръжение TFT IDTV е в съответствие с Директива 2014/53/ЕС. Цялостният текст на ЕС декларацията за съответствие може да се намери на следния интернет адрес: doc.vosshub.com
- CZ:** Tímto VESTEL Elektronik Sanayi ve Ticaret A.Ş., prohlašuje, že typ rádiového zařízení TFT IDTV je v souladu se směrnicí 2014/53/EU. Úplné znění EU prohlášení o shodě je k dispozici na této internetové adrese: doc.vosshub.com
- DA:** Hermed erklærer VESTEL Elektronik Sanayi ve Ticaret A.Ş., at radioudstyrstypen TFT IDTV er i overensstemmelse med direktiv 2014/53/EU. EU-overensstemmelseserklæringens fulde tekst kan findes på følgende internetadresse: doc.vosshub.com
- DE:** Hiermit erkläre VESTEL Elektronik Sanayi ve Ticaret A.Ş., dass der Funkanlagentyp TFT IDTV der Richtlinie 2014/53/EU entspricht. Der vollständige Text der EU-Konformitätserklärung ist unter der folgenden Internetadresse verfügbar: doc.vosshub.com
- EL:** Με την παρούσα ο/η VESTEL Elektronik Sanayi ve Ticaret A.Ş., δηλώνει ότι ο ραδιοεξοπλισμός TFT IDTV πληροί την οδηγία 2014/53/ΕΕ. Το πλήρες κείμενο της δήλωσης συμμόρφωσης ΕΕ διατίθεται στην ακόλουθη ιστοσελίδα στο διαδίκτυο: doc.vosshub.com
- ES:** Por la presente, VESTEL Elektronik Sanayi ve Ticaret A.Ş., declara que el tipo de equipo radioeléctrico TFT IDTV es conforme con la Directiva 2014/53/UE. El texto completo de la declaración UE de conformidad está disponible en la dirección Internet siguiente: doc.vosshub.com
- ET:** Käesolevaga deklareerib VESTEL Elektronik Sanayi ve Ticaret A.Ş., et käesolev radioseadme tüüp TFT IDTV vastab direktiivi 2014/53/EL nõuetele. Eli vastusdeklaratsiooni täielik tekst on kättesaadav järgmisel internetiaadressil: doc.vosshub.com
- FI:** VESTEL Elektronik Sanayi ve Ticaret A.Ş., vakuuttaa, että radiolaitetyypin TFT IDTV on direktiivin 2014/53/EU mukainen. EU-vaatimustenmukaisuusvakuutuksen täysimittainen teksti on saatavilla seuraavassa internetosoitteessa: doc.vosshub.com
- FR:** Le soussigné, VESTEL Elektronik Sanayi ve Ticaret A.Ş., déclare que l'équipement radioélectrique du type TFT IDTV est conforme à la directive 2014/53/UE. Le texte complet de la déclaration UE de conformité est disponible à l'adresse internet suivante: doc.vosshub.com
- HR:** VESTEL Elektronik Sanayi ve Ticaret A.Ş., ovime izjavljuje da je radijska oprema tipa TFT IDTV u skladu s Direktivom 2014/53/EU. Cjeloviti tekst EU izjave o skladnosti dostupan je na sljedećoj internetskoj adresi: doc.vosshub.com
- HU:** VESTEL Elektronik Sanayi ve Ticaret A.Ş., igazolja, hogy a TFT IDTV típusú rádióberendezés megfelel a 2014/53/EU irányelvnek. Az EU-megfelelőségi nyilatkozat teljes szövege elérhető a következő internetes címen: doc.vosshub.com
- IT:** Il fabbricante, VESTEL Elektronik Sanayi ve Ticaret A.Ş., dichiara che il tipo di apparecchiatura radio TFT IDTV è conforme alla direttiva 2014/53/UE. Il testo completo della dichiarazione di conformità UE è disponibile al seguente indirizzo Internet: doc.vosshub.com
- LT:** Aš, VESTEL Elektronik Sanayi ve Ticaret A.Ş., patvirtinu, kad radio įrenginių tipas TFT IDTV atitinka Direktyvą 2014/53/ES. Visas ES atitikties deklaracijos tekstas prieinamas šiuo interneto adresu: doc.vosshub.com
- LV:** Ar šo VESTEL Elektronik Sanayi ve Ticaret A.Ş., deklarē, ka radioiekārtā TFT IDTV atbilst Direktīvai 2014/53/ES. Pilns ES atbilstības deklarācijas teksts ir pieejams šādā internetā vietnē: doc.vosshub.com
- MT:** B'dan, VESTEL Elektronik Sanayi ve Ticaret A.Ş., niddikjara li dan it-tip ta' tagħmir tar-radju TFT IDTV huwa konformi mad-Direttiva 2014/53/UE. It-test kollu tad-dikjarazzjoni ta' konformità tal-UE huwa disponibbli f'dan l-indirizz tal-Internet li ġej: doc.vosshub.com
- NL:** Hierbij verklaar ik, VESTEL Elektronik Sanayi ve Ticaret A.Ş., dat het type radioapparaatru TFT IDTV conform is met Richtlijn 2014/53/EU. De volledige tekst van de EU-conformiteitsverklaring kan worden geraadpleegd op het volgende internetadres: doc.vosshub.com
- PL:** VESTEL Elektronik Sanayi ve Ticaret A.Ş., niniejszym oświadczam, że typ urządzenia radiowego TFT IDTV jest zgodny z dyrektywą 2014/53/UE. Pełny tekst deklaracji zgodności UE jest dostępny pod następującym adresem internetowym: doc.vosshub.com
- PT:** O(a) abaixo assinado(a) VESTEL Elektronik Sanayi ve Ticaret A.Ş., declara que o presente tipo de equipamento de rádio TFT IDTV está em conformidade com a Diretiva 2014/53/UE. O texto integral da declaração de conformidade está disponível no seguinte endereço de Internet: doc.vosshub.com
- RO:** Prin prezenta, VESTEL Elektronik Sanayi ve Ticaret A.Ş., declară că tipul de echipamente radio TFT IDTV este în conformitate cu Directiva 2014/53/UE. Textul integral al declarației UE de conformitate este disponibil la următoarea adresă internet: doc.vosshub.com
- SK:** VESTEL Elektronik Sanayi ve Ticaret A.Ş., týmto vyhlasuje, že rádiové zariadenie typu TFT IDTV je v súlade so smernicou 2014/53/EU. Úplné EU vyhlásenie o zhode je k dispozícii na tejto internetovej adrese: doc.vosshub.com
- SL:** VESTEL Elektronik Sanayi ve Ticaret A.Ş., potrjuje, da je tip radijske opreme TFT IDTV skladen z Direktivo 2014/53/EU. Celotno besedilo izjave EU o skladnosti je na voljo na naslednjem spletnem naslovu: doc.vosshub.com
- SV:** Härmed försäkras VESTEL Elektronik Sanayi ve Ticaret A.Ş., att denna typ av radioustrüstning TFT IDTV överensstämmer med direktiv 2014/53/EU. Den fullständiga texten till EU-försäkran om överensstämmelse finns på följande webbadress: doc.vosshub.com

CE

